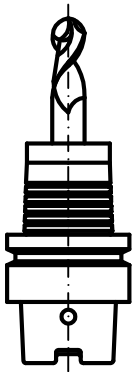
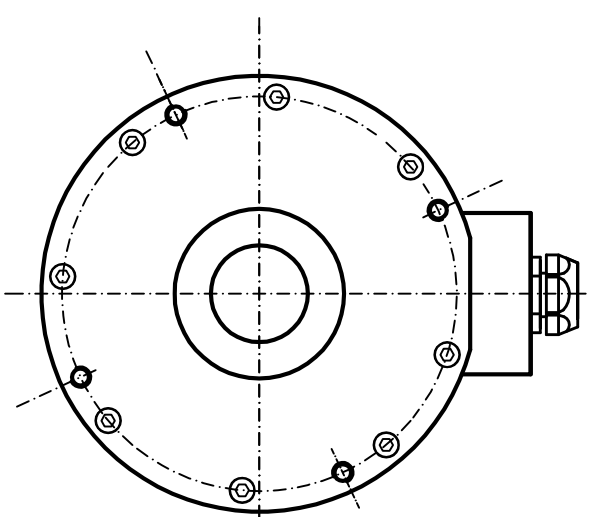
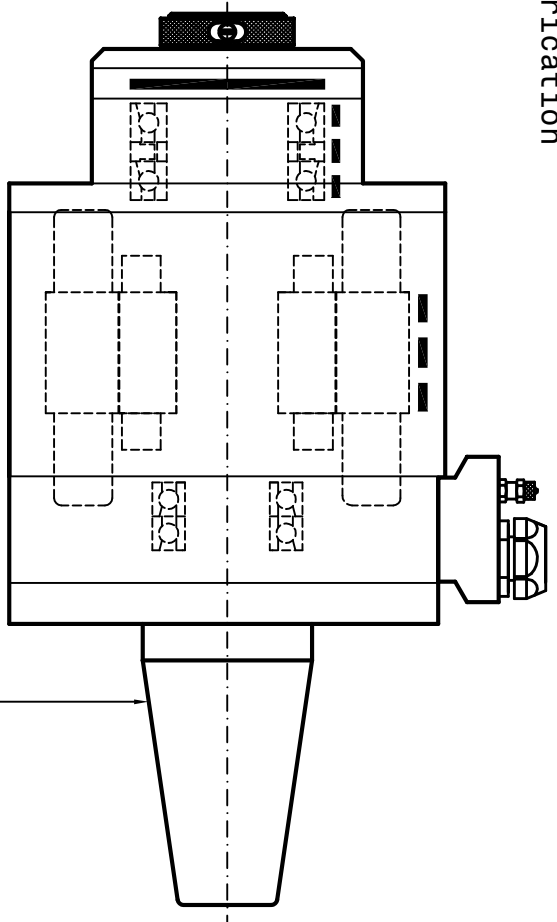


Grease Bearings Lubrication

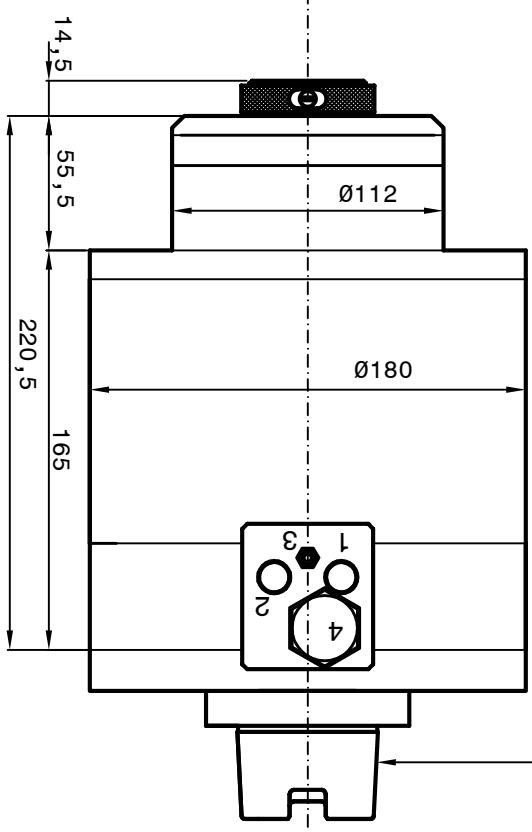
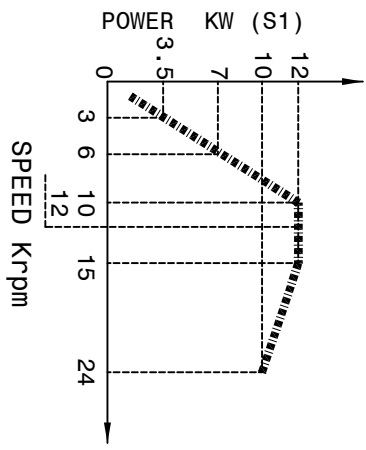
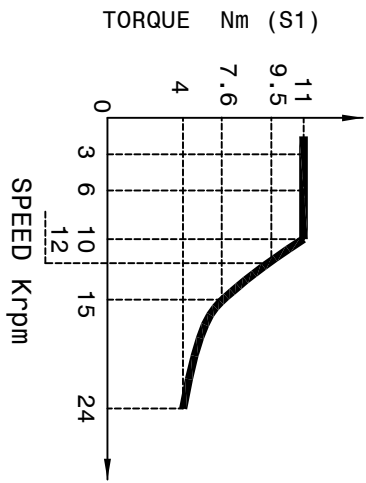


Tool holder HSK C 50  
DIN 69893



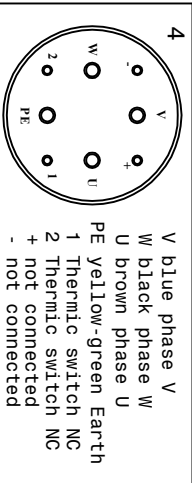
ARBOR ISO - BT

SPEED	RPM	3000	6000	10000	12000	15000	24000
FREQUENCY	Hz	100	200	334	400	500	800
POWER (S1)	KW	3.5	7	12	12	12	10
TORQUE (S1)	Nm	11	11	11	9.5	7.6	4
TENSION	V	105	200	330	380	380	380
CURRENT	A	31	30	30	26	25	16



ARBOR HSK A/E DIN 69893

- 1-Coolant inlet (G1/8") (3÷4 bar) (2÷3 l/min.)
- 2-Coolant outlet (G1/8")
- 3-Front-side pressurization filtered (5µm) (1-1.5 bar) (G1/8")
- 4-Electric connection L=300mm  
3phases motor - Earth  
-Motor thermal switch (N°1 NC)



Runout arbor 0.002mm

**Peron Speed**  
INTERNATIONAL

SUBJECT: PSI A-7  
CUSTOMER:

Sheet:1/1 Dis.n°:186-00-03-A7 DATE:22/08/2022