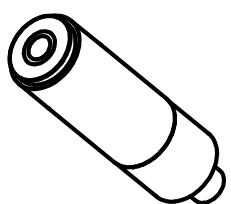


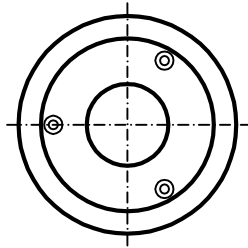
Cono ISO 20 DIN 69871



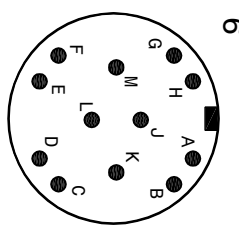
TOOL HOLDER HSK E25/32  
DIN 69893



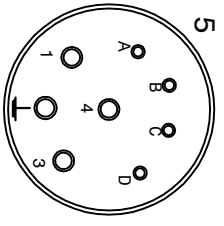
Grease Bearings Lubrication  
Cooling capacity = 650 Watt



- 1-Coolant inlet (G1/8") (2÷3 L/min.) (3-4 bar)
- 2-Coolant outlet (G1/8")
- 3-Inlet air pressure clamping tool (min 6bar - max 8bar) (G1/8")
- 4-Inlet air arbor's cleaning (6 bar) (M5)
- 5-Electric connection (L=300)
  - 3 Phases motor - Earth
  - Motor thermal switch (N°1 PTC 130)
- 6-Outlet sensor's cables (S1-S2-S3-S4) (L=300mm)
  - S1 = Tool's arbor clamped.
  - S2 = Piston under pressure ready to receive tools arbor.
  - The electrosppindle can not turn.
- 7-Front-side pressurization filtered (5µm) (1-1.5 bar) (M5)
- 8-Tool cooling water (G1/8") (10 bar)

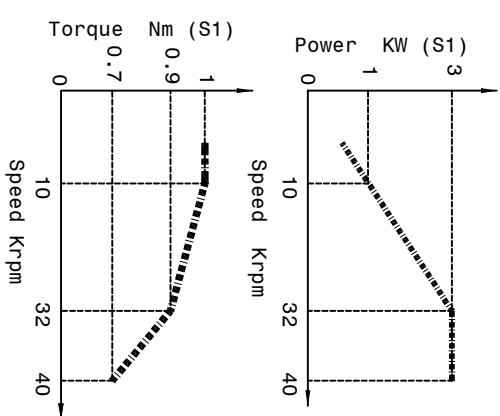


- A blue 0 V DC
- B brown +24 V DC
- C black S1 signal
- D black S2 signal
- E black S3 signal
- F not connected
- G not connected
- H not connected
- J not connected
- L not connected
- M not connected
- K not connected



- 1 brown phase U
- 2 yellow-green Earth
- 3 blue phase V
- 4 black phase W
- A thermic switch PTC 130
- B thermic switch PTC 130
- C not connected
- D not connected

|             |     |       |       |       |
|-------------|-----|-------|-------|-------|
| SPEED       | RPM | 10000 | 32000 | 40000 |
| FREQUENCY   | Hz  | 334   | 1094  | 1333  |
| POWER (S1)  | KW  | 1     | 3     | 3     |
| TORQUE (S1) | Nm  | 1     | 0.9   | 0.7   |
| TENSION     | V   | 116   | 380   | 380   |
| CURRENT     | A   | 7.7   | 6.7   | 6.7   |



Asynchronous motor: 4 poles Runout taper 0.002mm

**Peron Speed** INTERMILL  
SUBJECT: PSI - TC - 101  
CUSTOMER:

Sheet: 1/1 Dis. n°2363-00-04 DATE: 12/08/2022

