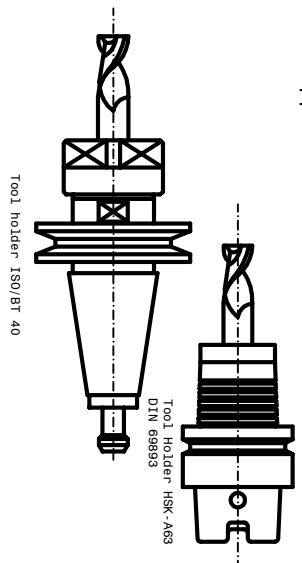
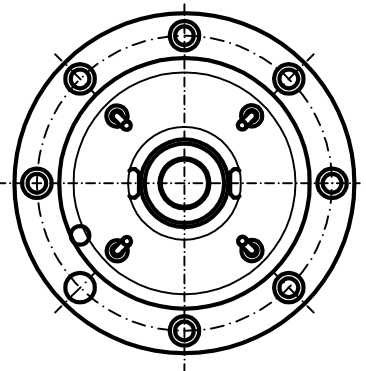
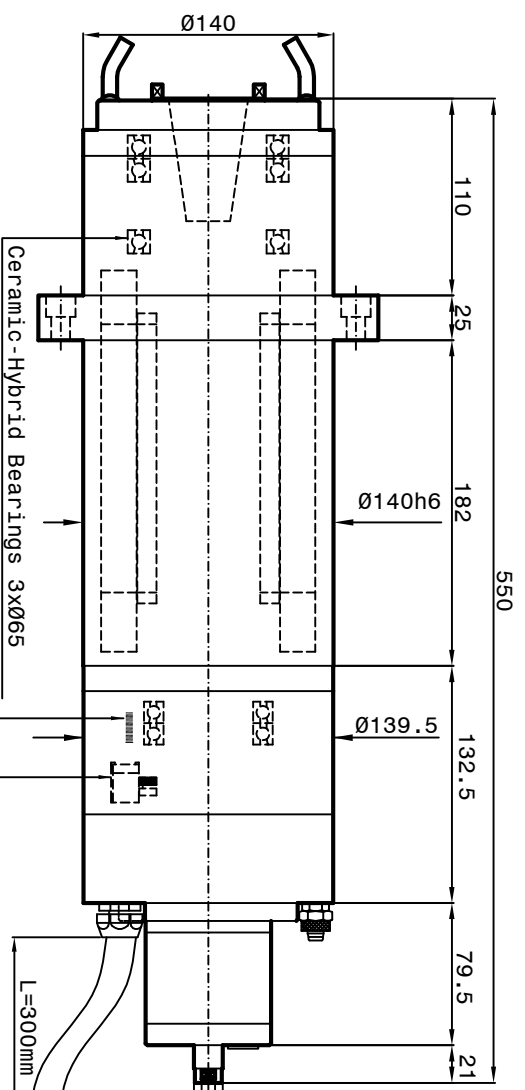


Air-Oil Bearings Lubrication
Mobil DTE Light ISO VG 32
Cooling capacity = 2800 Watt

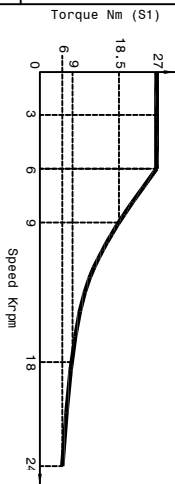
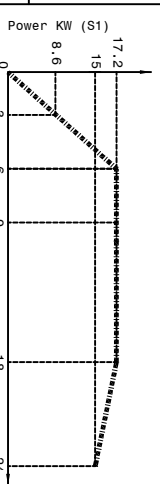
- 1-Coolant inlet (G1/4") (3-4 bar) (4+5 L/min.)
- 2-Coolant outlet (G1/4")
- 3-Hydraulic pressure unclamping tool (min 80bar - max 90bar) (G1/4")
- 4-Hydraulic pressure clamping tool (Return piston) (10bar max) (G1/4")
- 5-Electric connection (L=300)
- 3 Phases motor - Earth
- 6-Outlet sensor's cables (S1-S2-S4) (L=300mm)
- S1 PNP = Toolholders clamped.
- S2 PNP = Piston under pressure ready to receive tools arbor.
- The electrospindle can not turn.
- S4 PNP = Toolholders not clamped. The electrospindle cannot turn.
- PT 100 Bearing's temperature sensor
- 7-Front-side pressurization filtered (5µm) (1-1.5 bar) (G1/8")
- 9-Front bearings Lubrication -1 (G1/8")
- 10-Front bearings Lubrication -2 (G1/8")
- 11-Rear bearings Lubrication (G1/8")
- 12-Unloading Lubrication bearings (G1/8")
- through aspiration type Festo VAD 1/4
- 15-Outlet encoder's cables (Gel 2444 KN) (L=300mm)
- Motor thermich switch (N°1 PT 1000)
- 19-Inlet air arbor's cleaning (6 bar) (G1/8")



- 15
-
- 1 white A+
 - 2 brown A-
 - 3 grey Ref+
 - 4 not connected
 - 5 not connected
 - 6 not connected
 - 7 blue 0V
 - 8 white-red thermal switch PT 1000
 - 9 white-red thermal switch PT 1000
 - 10 red +5V Dc
 - 11 pink B+
 - 12 black B-
 - 13 yellow Ref-
 - 14 not connected
 - 15 blue 0V
 - 16 green 5V sensor
 - 17 not connected
- screen on carcass

- 6
-
- 1 brown +24 V DC
 - 2 blue 0 V DC
 - 3 black S1 signal
 - 4 black S2 signal
 - 5 not connected
 - 6 black S4 signal
 - 7 not connected
 - 8 not connected
 - 9 not connected
 - 10 PT 100
 - 11 not connected
 - 12 PT 100
- 5
-
- V blue phase V
 - W black phase W
 - U brown phase U
 - PE yellow-green Earth
 - 1 not connected
 - 2 not connected
 - 3 not connected
 - 4 not connected

SPEED	RPM	3000	6000	9000	18000	24000
FREQUENCY	Hz	159	308	449	900	1200
POWER (S1)	KW	8.6	17.2	17.2	17.2	15
TORQUE (S1)	Nm	27	27	18.5	9	6
TENSION (S1)	V	124	240	350	350	350
CURRENT (S1)	A	61	60	47	41	36



Motor Asynchronous: 6 poles Runout taper 0.002m

Paron Speed ANALOGIC SUBJECT : PSI TCV-109 CUSTOMER :

