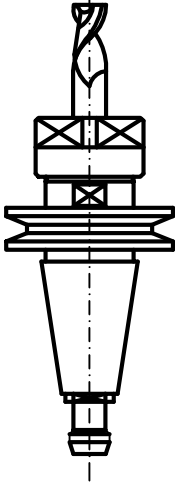
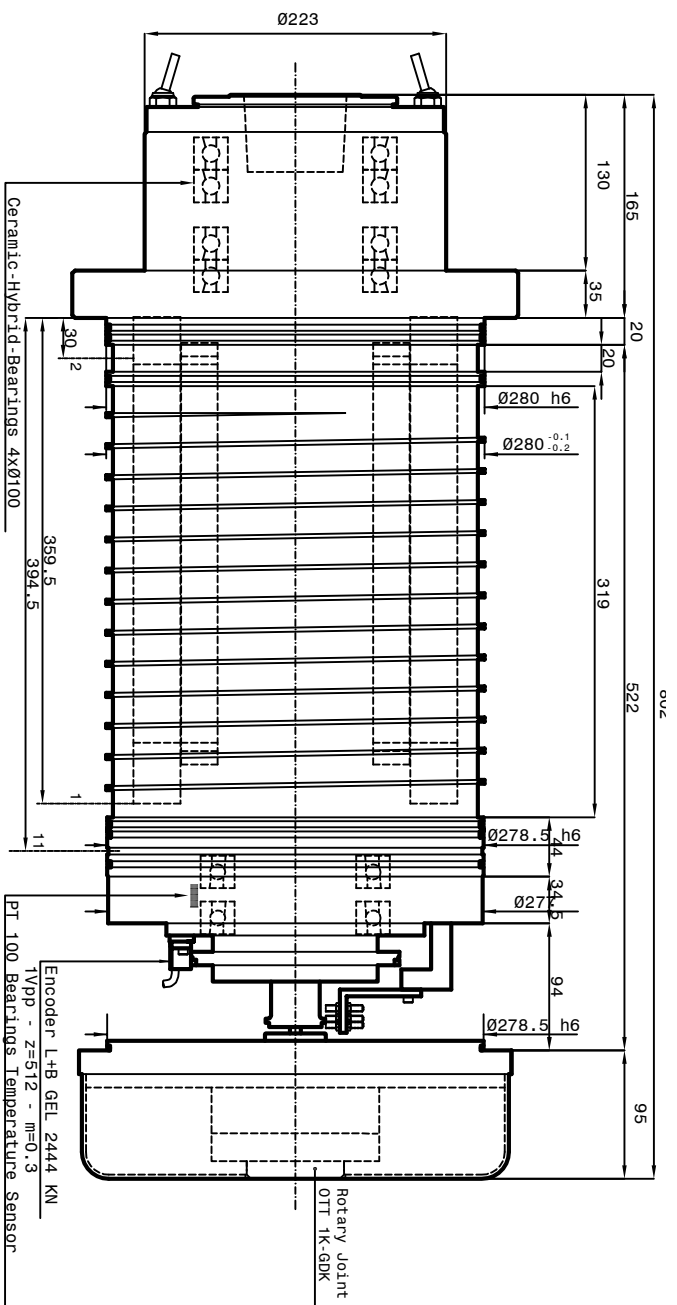


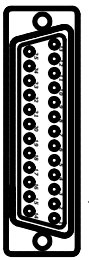
TOOL HOLDER HSK-A100 DIN 69893



Tool holder ISO/BT 50
DIN 69871

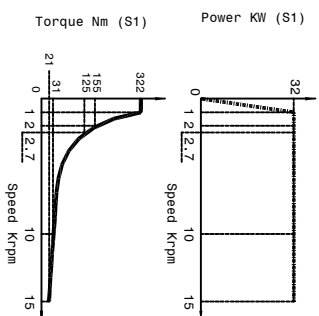
- 1-Coolant inlet (3-4 bar)(10-12 l/min.)
- 2-Coolant pressure unclamping tool (min 90bar) (05)
- 3-Hydraulic pressure clamping tool (Return piston) (10bar max) (05)
- 4-Hydraulic pressure clamping tool (Return piston) (10bar max) (05)
- 5-Electric connection
- 6-Phases motor - Earth
- 7-Phase W n°2 cables Ø10 mm
- 8-Phase U n°2 cables Ø10 mm
- 9-Phase V n°2 cables Ø10 mm
- 10-PT sensor Toolholders clamped
- 11-PNP sensor Toolholders clamped
- 12-PT sensor Toolholders not turn.
- 13-PT sensor Toolholders not turn.
- 14-PT sensor Toolholders not turn.
- 15-PT sensor Toolholders not turn.
- 16-PT sensor Toolholders not turn.
- 17-PT sensor Toolholders not turn.
- 18-Rotary joint leakage outlet (G1/8")

Cooling capacity = 4950 Watt
Air-Oil Bearings Lubrication
Mobil DTE Light ISO VG 32



Signal encoder	Signal proxy
1 = White	A+
2 = Brown	A-
3 = Pink	B+
4 = Black	B-
5 = Grey	R+
6 = Yellow	R-
7 = Red	+5V
8 = Blue	0V
9 = Green	+5V Sense
10 = Shield	

SPEED	RPM	1000	2000	2500	10000	15000
ENERGY	Hz	50	100	125	500	750
TORQUE (S1)	Nm	222	155	123	31	21
TENSION (S1)	V	165	310	380	380	380
CURRENT (S1)	A	160	103	96	40	40
POWER (S5-40% 2 min.)	Nm	411	194	157	39	26
TORQUE (S5-40% 2 min.)	Nm	155	310	380	380	380
TENSION (S5-40% 2 min.)	V	165	310	380	380	380
CURRENT (S5-40% 2 min.)	A	155	114	103	40	40



Asynchronous motor: 6 poles
Runout taper 0.002mm
SUBJECT: PSI TCV-S-211
CUSTOMER:
DATE : 17/08/2022

