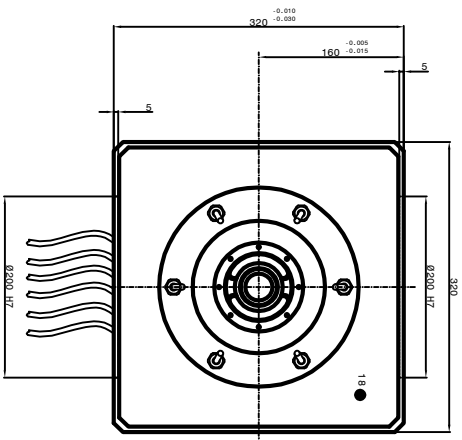
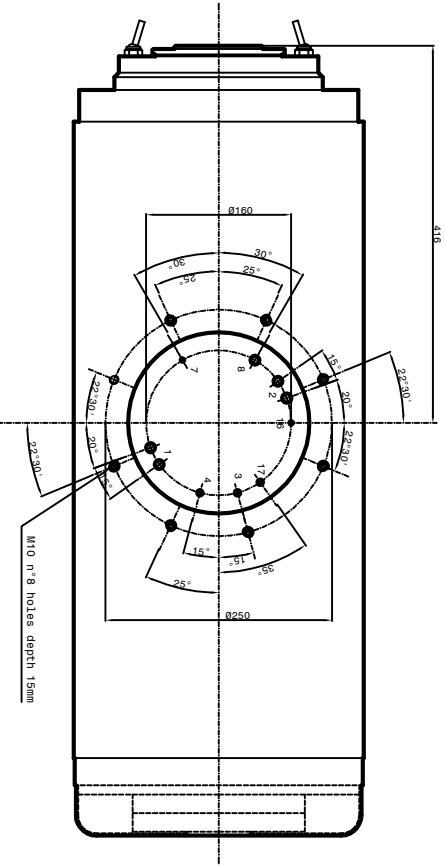
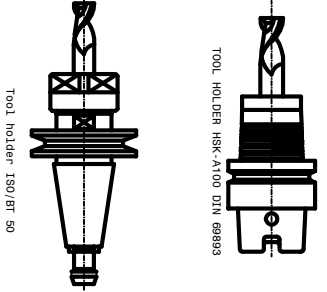


Rotary Joint
OTT TK-GDK-44



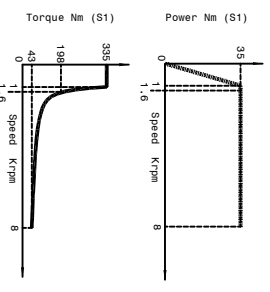
Cables L = 2000mm



Grease Bearings Lubrication
Coiling Capacity = 3800 Watt

- 1-Coolant inlet (2XØ10)(3-4 bar)(12-13 l/min.)
- 2-Coolant outlet (2XØ10) clamping
- 3-Tool pin (max 90bar) (Ø5)
- 4-Hydraulic pressure clamping
- 5-Electric connection (L=2000)
- 3 phases motor - Earth
- 6-Outlet sensor's cables (S6)(L=2000mm)
- S6 = Analogic sensor Balluff
- 7-PT 100 Bearing's temperature sensor
- 8-Tool cooling water (Ø10)(20 bar)
- 9-Tool thermal switch (10 x 11 1000)
- 10-Encoder's cables (Gel 2444 KN)(L=2000mm)
- 11-Encoder's cables (1.1.5 bar) (5mm)
- 12-Tool's Lubro refrigerant inlet by rotary(Ø0 bar)
- 13-rotary joint cleaning (Ø bar)
- 14-rotary joint leakage outlet (Ø1/8")
- 15-rotary joint leakage outlet (Ø1/8")

SPEED	1000	1200	8000
POWER (S1)	35	35	35
TORQUE (S1)	35	35	35
TENSION (S1)	V	235	380
CURRENT (S1)	A	114	78



Asynchronous motor's plates
Paron Speed
SUBJECT: PSI ES-300
CUSTOMER:
DATE: