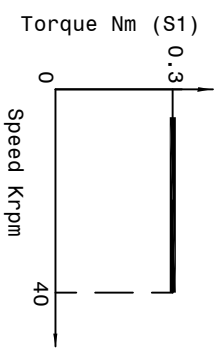
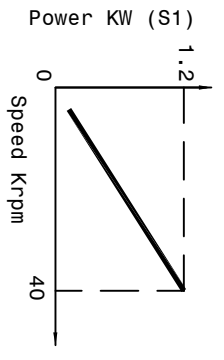
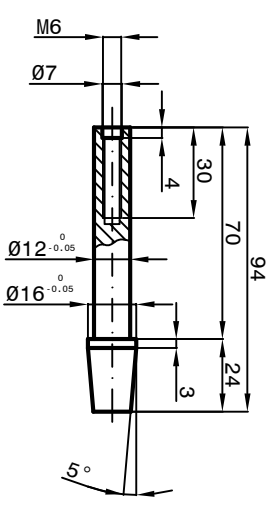
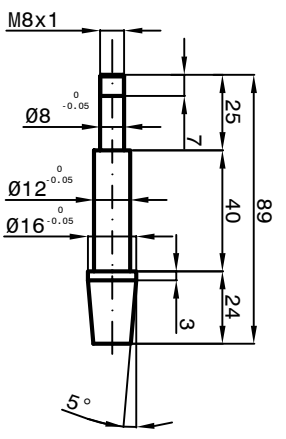
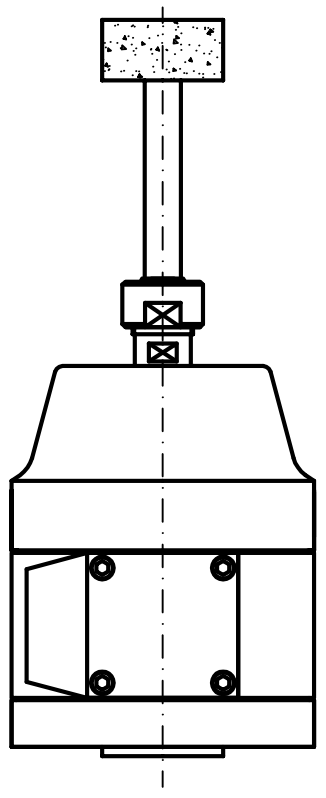


SPEED	RPM	40000
FREQUENCY	Hz	667
POWER (S1)	KW	1.2
TORQUE (S1)	Nm	0.3
TENSION	V	220
CURRENT	A	4.8



**Peron Speed**  
INTERNATIONAL

SUBJECT: PSI JG-1  
CUSTOMER:

Sheet: 1 / 1

Dis. n°: 1038-00

DATE: 14/02/2023