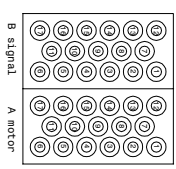
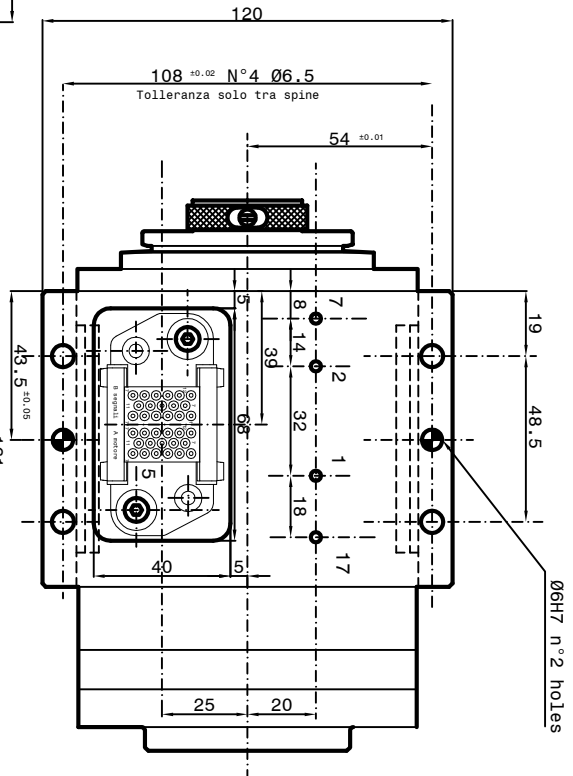


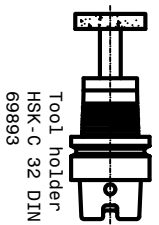
L7M-L7M-2UMS1-11



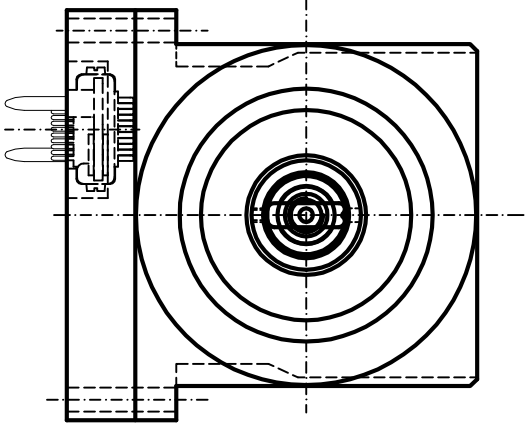
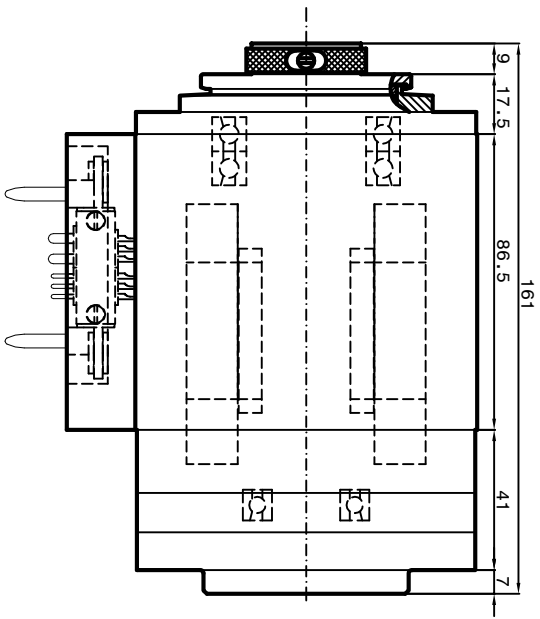
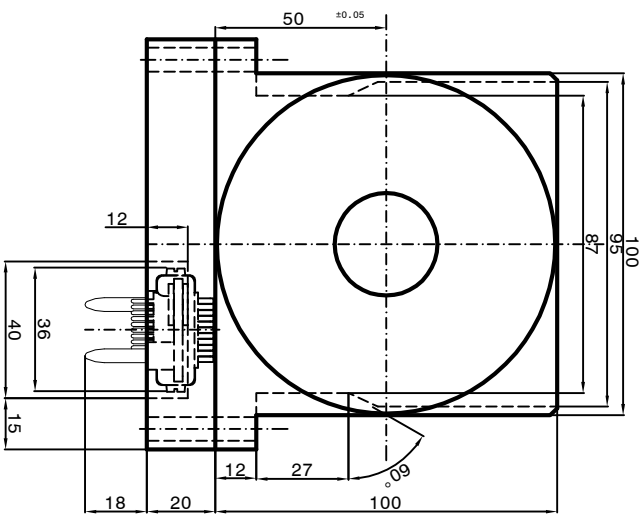
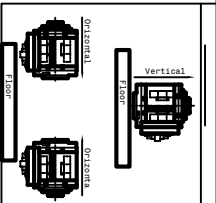
B pin connector signal	A pin connector motor
1 not connected	1 brown phase U
2 not connected	2 blue phase V
3 not connected	3 yellow phase W
4 not connected	4 yellow phase Earth
5 not connected	5 not connected
6 not connected	6 not connected
7 not connected	7 thermal switch PTC100
8 not connected	8 thermal switch PTC100
9 not connected	9 not connected
10 S3 + BN	10 not connected
11 S3 BK	11 not connected
12 S3 BK	12 not connected
13 S3 + BN	13 not connected
14 S3 BK	14 not connected



Ø6H7 n°2 holes



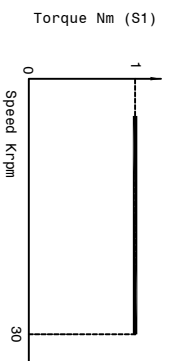
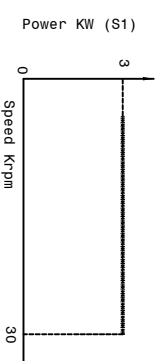
Tool holder
HSK-C 32 DIN
69893



Grease Bearings Lubrication
Cooling capacity = 650 Watt

- 1-Coolant inlet (Ø3") (3-4 bar)
- 2-coolant outlet (Ø3)
- 3-Hydraulic pressure unclamping
- 5-Electric connection
- 3 Phases motor - Earth
- Motor thermal switch (N°1 PTC 130)
- S3 = (n°2)Signal of spindle rotating
- Balluff BES R04KC-PS015B-EP2
- 7-Front side pressurization filtered (5µm) (1-1.5 bar) (Ø3)
- 17-Inlete air for center filtered (5µm) (6 bar) (Ø3)

SPEED	RPM	30000
FREQUENCY	Hz	1000
POWER (S1)	KW	3
TORQUE (S1)	Nm	1
TENSION	V	380
CURRENT	A	8



Asynchronous motor : 4 poles
Runout taper 0.002 mm

Peron Speed MEMBER OF
SUBJECT: PSI RGV-10C
CUSTOMER: