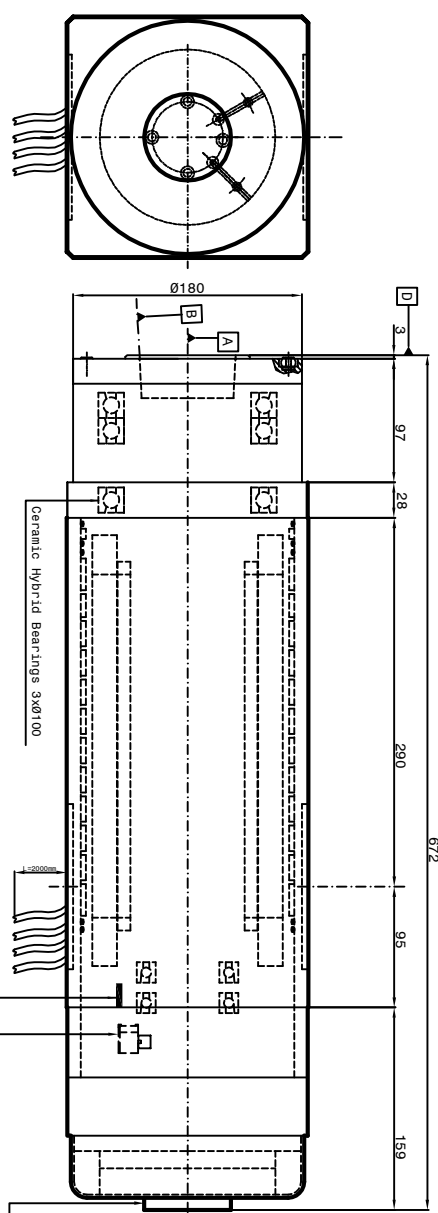
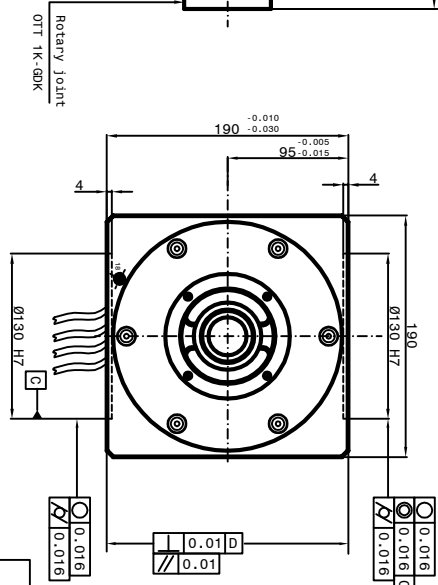


Tool holder HSK A 100  
DIN 69893

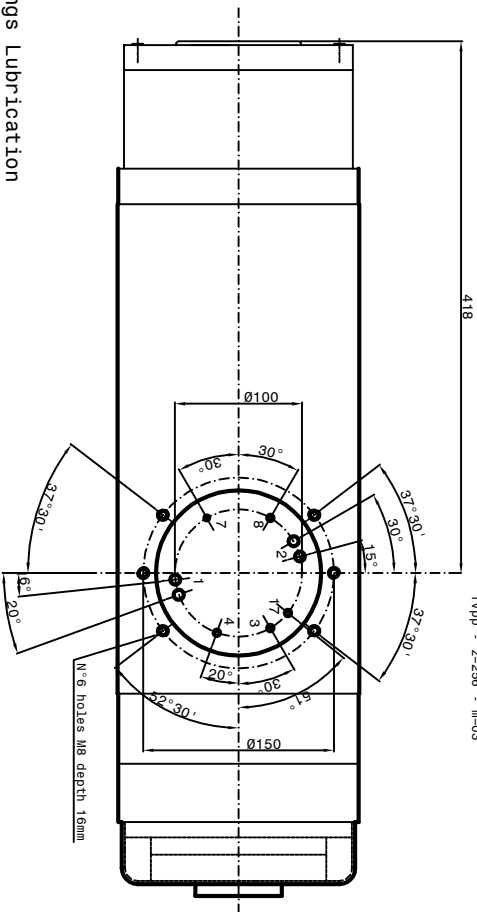
Tool holder ISO/BT 50



Encoder L48 GEL 2444 KN  
TVPP - Z-258 - m-03



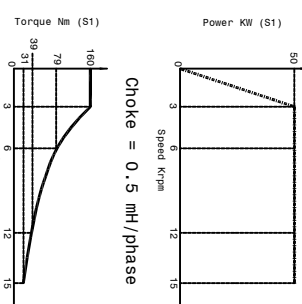
Rotary joint  
Ø17 H6/g6



W 6 holes M8 depth 16mm

- 1-Coolant inlet (2xØ8) (3-4 bar) (16-18 l/min.)
- 2-Coolant outlet (2xØ8)
- 3-Hydraulic pressure unclamping tool (min 80bar - max 90bar) (Ø5)
- 4-Hydraulic pressure clamping tool (return piston) (10bar max) (Ø5)
- 5-Electric connection (Earth)
- 3 Phases motor V n°2 cables Ø7
- Phases motor W n°2 cables Ø7
- Earth n°2 cables Ø6
- Outlet sensor's cables (S1-S2-S4-S5) (L=2000mm)
- S1 PNP = Toolholders clamped Ø4
- S2 PNP = Piston under pressure ready to receive tools arbor Ø4
- The electrospindle can not turn.
- S4 PNP = Toolholders not clamped Ø4
- The electrospindle cannot turn.
- S5 PNP = Sensor return piston Ø4
- PT 100 Bearing's temperature sensor
- Outlet encoder's cables (GEL 2443 KN) Ø6(L=2000mm)
- Motor thermal switch (N°1 KTY)
- Outlet Ballbed sensor Ø6(L=2000mm)
- 7-F-11.5 bar) (Ø4)
- 8-Tool cooling water (Ø5)(20 bar)
- 9-Front bearings Lubrication -1 (M5)
- 10-Front bearings Lubrication -2 (M5)
- 11-Rear bearings Lubrication (M5)
- 12-unloading Lubrication bearings (M5)
- 17-Tool's Lubro refrigerant inlet by rotary (Ø6 bar) joint (Ø5)
- Inlet air arbor's cleaning (Ø bar)
- 18-Rotary joint leakage outlet

REF ID	REF ID	REF ID	REF ID
POWER (S1)	79	50	50
TORQUE (S1)	39	50	50
FEED (S1)	150	150	150
FEED (S1)	150	150	150
FEED (S1)	150	150	150
FEED (S1)	150	150	150



Synchronous Motor: 6 poles  
Rimout taper 0.002 mm

**Peron Speed**  
SUBJECT: PSI ES-112  
CUSTOMER:

Sheet: 1/1  
DTS: N-2666-00-04  
DATE :

Air-Oil Bearings Lubrication  
Mobil DTE Light ISO VG 32  
Cooling capacity=7650 Watt

