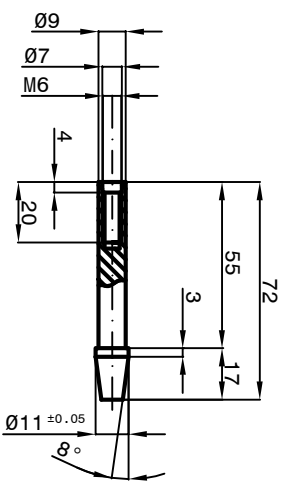
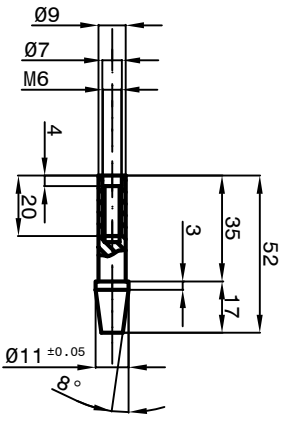
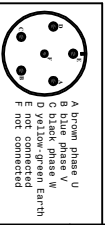
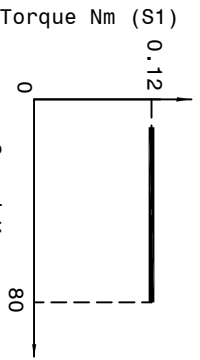
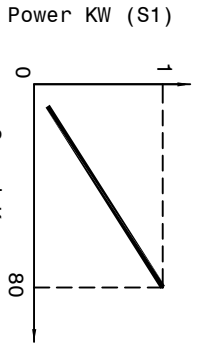
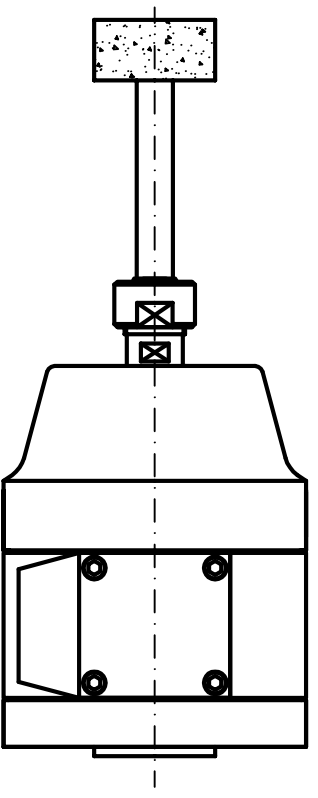


SPEED	RPM	80000
FREQUENCY	Hz	1333
POWER (S1)	KW	1
TORQUE (S1)	Nm	0.12
TENSION	V	150
CURRENT	A	6



Peron Speed
INTERNATIONAL

SUBJECT: PSI JG-2
CUSTOMER:

Sheet: 1 / 1

Dis. n°: 1036-00

DATE: 14/02/2023