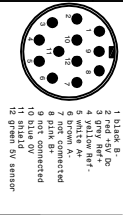
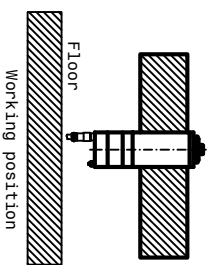
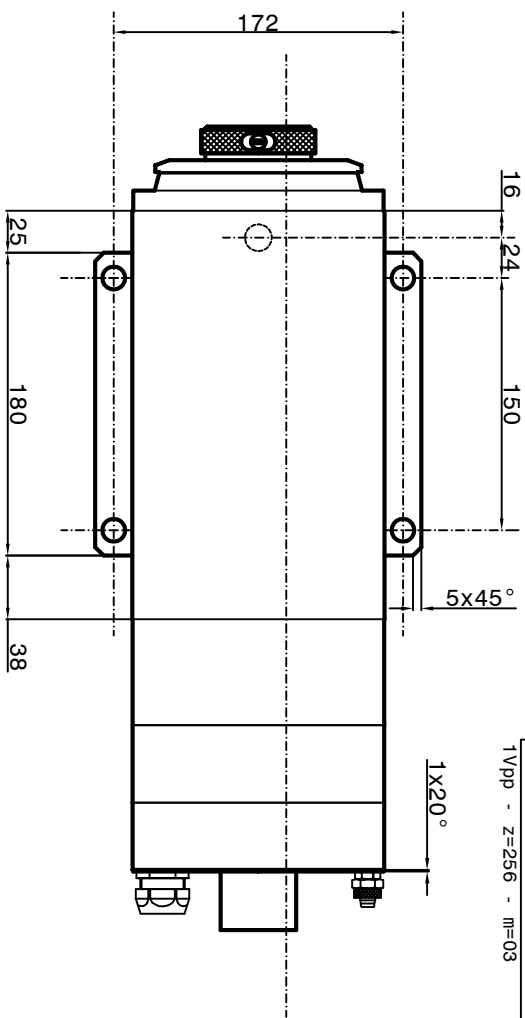
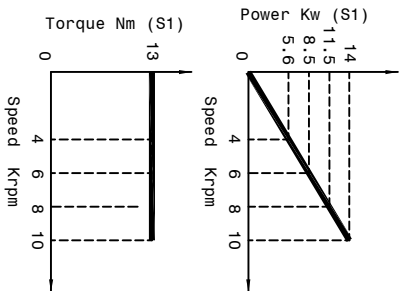


Air Oil Bearings Lubrication  
Mobil DTE Light ISO VG 32  
Cooling capacity = 2250 Watt

- 1-Coolant inlet (G1/8") (4 l/min.) (3-4 bar)
- 2-Coolant outlet (G1/8")
- 3-Electric connection (L=3000)
- 3 Phases motor - Earth
- 4-Front bearings lubrication (G1/8")
- 5-Rear bearings lubrication (G1/8")
- 6-Unloading lubrication bearings (G1/8") through aspiration type Festo VAD 1/8 (6 bar)
- 7-Front-side pressurization filtered (5µm) (1-1.5 bar) (G1/8")
- 9-Outlet encoder's cables (Gel 2444 KN) (L=3000mm)
- 24-Outlet motor thermal switch (N°1 PT 1000 + N°1PTC 130)



SPEED	RPM	4000	6000	8000	10000
FREQUENCY	Hz	200	300	400	500
POWER	Kw	5.6	8.5	11.5	14
TORQUE	Nm	13	13	13	13
TENSION	V	136	200	265	325
CURRENT	A	42	42	42	41



Asynchronous motor: 6 poles

Runout taper 0.002mm

**Peron Speed** CUSTOMER: SUBJECT: PSI RGV-150

Sheet: 1/1 Dis. n° 2400-00 DATE: 14/02/2023