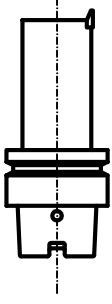
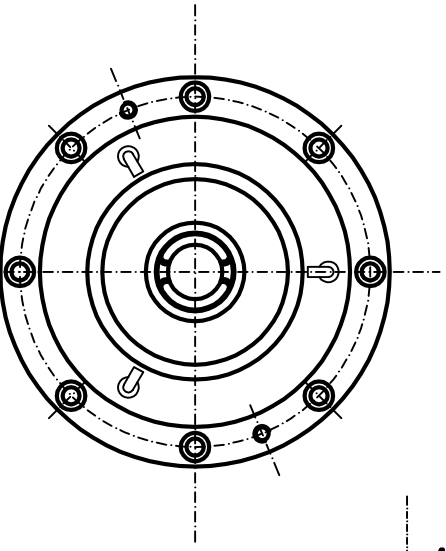
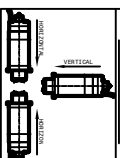
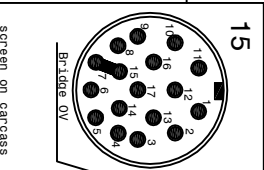
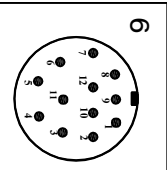
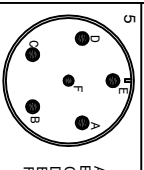


Ceramic-hybrid bearings 2x040
 System to block the shaft by Hirt gear
 With n°12 blocking bearings
 Encoder L+B GEL 2444 KN
 1Vpp - Z=256 - M=03
 Termich sensor bearings PT100



Tool holder HSK-T40
 DIN 69893

- Cooling capacity = 1950 Watt
 Air-Oil Bearings Lubrication
 Mobil DTE Light ISO VG 32
- Coolant inlet (G1/8") (3+4 bar) (3+4 L/min.)
 - Coolant outlet (G1/8")
 - Hydraulic pressure unclamping tool (50bar max) (G1/4")
 - Inlet air arbor's cleaning 6 bar (G1/8") (please use only and exclusively with released tool and piston under pressure)
 - Electric connection
 3Phases motor - Earth
 S1 = Tool's arbor clamped.
 S2 = Piston under pressure ready to receive tools arbor.
 The electrospindle cannot turn.
 S4 = Tool's arbor not clamped
 The electrospindle cannot turn.
 S7 = Sensor shaft to block Termich sensor bearings PT 100
 - Outlet sensor's cables (S1-S2-S4-S7)
 - Front side pressurization (G1/8")
 - Inlet air tool cooling (G1/8")
 - Front bearings Lubrication (G1/8")
 - Rear bearings Lubrication (G1/8")
 - Unloading Lubrication bearings (G1/4") through aspiration type Festo VAD 1/4
 - Outlet encoder's cables (Gel 2444 KN) Motor thermich switch (N°1 PT 1000)
 - Inlet oil (50 bar) for block the shaft (G1/8")

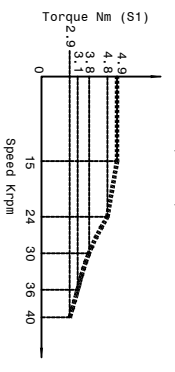
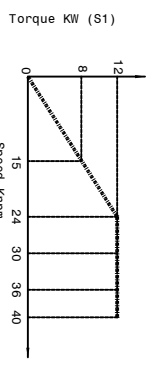


- A Brown phase U
 B Blue phase V
 C Black phase W
 D Yellow-green Earth
 E not connected
 F not connected

- 1 Brown +24 V DC
 2 Blue 0 V DC
 3 Black S1 signal
 4 Black S2 signal
 5 not connected
 6 Black S1
 7 Black S7 signal
 8 not connected
 9 not connected
 10 PT 100
 11 Shield
 12 PT 100

- 1 white A+
 2 brown A-
 3 grey Ref+
 4 not connected
 5 not connected
 6 not connected
 7 blue 0V
 8 white-red thermal switch PT 1000
 9 red +5V DC
 10 red +5V DC
 11 pink B+
 12 black B-
 13 yellow Ref-
 14 not connected
 15 not connected
 16 green S3 sensor
 17 not connected

SPEED	RPM	15000	24000	30000	36000	4000
FREQUENCY	Hz	583	1000	1000	1200	13
POWER (S1)	KW	8	12	12	12	11
TORQUE (S1)	Nm	4.9	4.8	3.8	3.1	2
TENSION	V	230	350	350	350	35
CURRENT	A	27	27	27	27	2



Asynchronous motor: 4 poles Runout taper 0.002mm
Feron Speed
 SUBLET: PSI TOV-T-10
 CUSTOMER:
 Sheet: 1/1 DIS. N°3432-00-01 DATE :