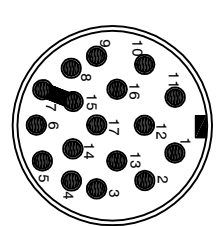
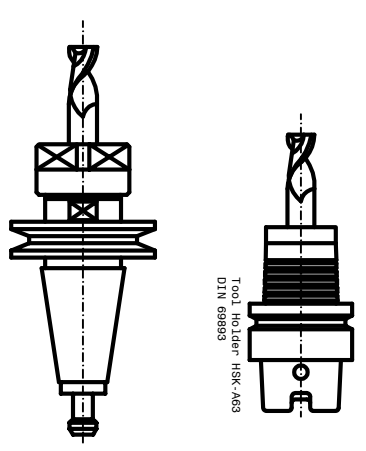
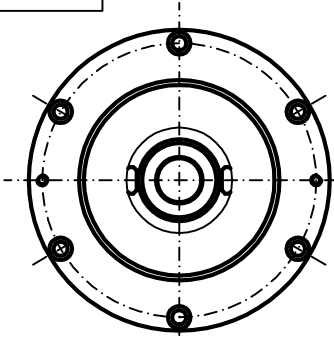
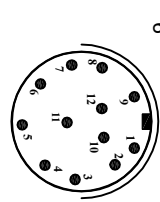


**Air-Oil Bearings Lubrication**  
**Mobil DTE Light ISO VG 32**  
**Cooling capacity = 2150 Watt**

- 1-Coolant inlet (G1/4" )(3-4 bar) (4±5 L/min.)
- 2-Coolant outlet (G1/4" )
- 3-Hydraulic pressure unclamping tool (min 80bar - max 90bar) (G1/4" )
- 4-Hydraulic pressure clamping tool (Return piston) (10bar max) (G1/4" )
- 5-Electric connection (L=300)
- 3 Phases motor - Earth (S1-S2-S4)(L=300mm)
- S1 PNP = Toolholders clamped.
- S2 PNP = Piston under pressure ready to receive tools arbor.
- The electrospindle can not turn.
- S4 PNP = Toolholders not clamped.
- The electrospindle cannot turn.
- PT 100 Bearing's temperature sensor
- 7-Front-side pressurization filtered (5µm) (1-1.5 bar) (G1/8" )
- 9-Front bearings Lubrication -1 (G1/8" ) (1-1.5 bar) (G1/8" )
- 10-Front bearings Lubrication -2 (G1/8" )
- 11-Rear bearings Lubrication (G1/8" )
- 12-Unloading lubrication bearings (G1/8" ) through aspiration type Festo VAD 1/4
- 15-Outlet encoder's cables (Gel 2444 KN) (L=300mm)
- Motor thermich switch (N°1 PT 1000)
- 19-Inlet air arbor's cleaning (6 bar) (G1/8" )

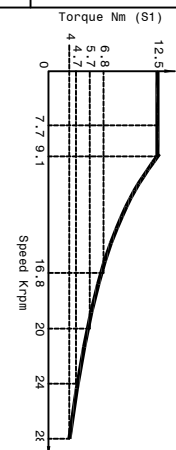
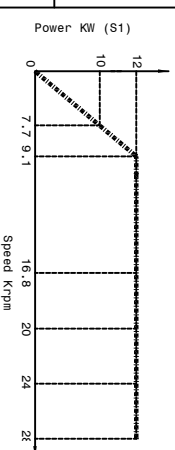


- 15
- 1 white A+
  - 2 brown A-
  - 3 grey Ref+
  - 4 not connected
  - 5 not connected
  - 6 not connected
  - 7 white OV
  - 8 white-red thermal switch PT 1000
  - 9 white-red thermal switch PT 1000
  - 10 red +5V Dc
  - 11 pink B+
  - 12 black B-
  - 13 yellow Ref-
  - 14 not connected
  - 15 blue OV
  - 16 green 5V sensor
  - 17 not connected
- screen on carcass



- 6
- 1 brown +24 V DC
  - 2 blue 0 V DC
  - 3 black S1 signal
  - 4 black S2 signal
  - 5 not connected
  - 6 black S4 signal
  - 7 not connected
  - 8 not connected
  - 9 not connected
  - 10 PT 100
  - 11 not connected
  - 12 PT 100
- 5
- 
- V blue phase V
  - W black phase W
  - U brown phase U
  - PE yellow-green Earth
  - 1 not connected
  - 2 not connected
  - 3 not connected
  - 4 not connected

SPEED	RPM	7700	9100	16800	20000	24000	28000
FREQUENCY	Hz	267	315	567	667	800	933
POWER (S1)	KW	10	12	12	12	12	12
TORQUE (S1)	Nm	12.5	12.5	6.8	5.7	4.7	4
TENSION (S1)	V	190	22	380	380	380	380
CURRENT (S1)	A	46	46	30	26	25	23



Motor Asynchronous: 4 poles Runout taper 0.002r  
**Peron Speed** SUBJECT : PSI TCV-110  
 CUSTOMER :  
 Sheet:1/1 Dis.:n°1488-00-01 DATE : 11/08/2022