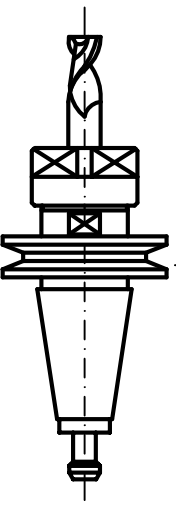
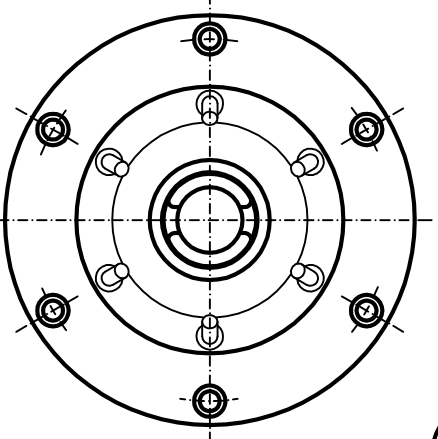
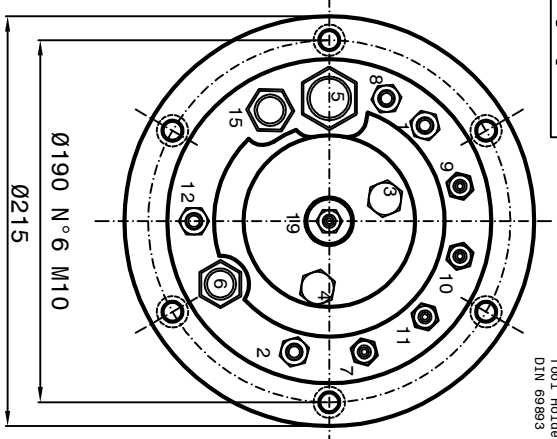
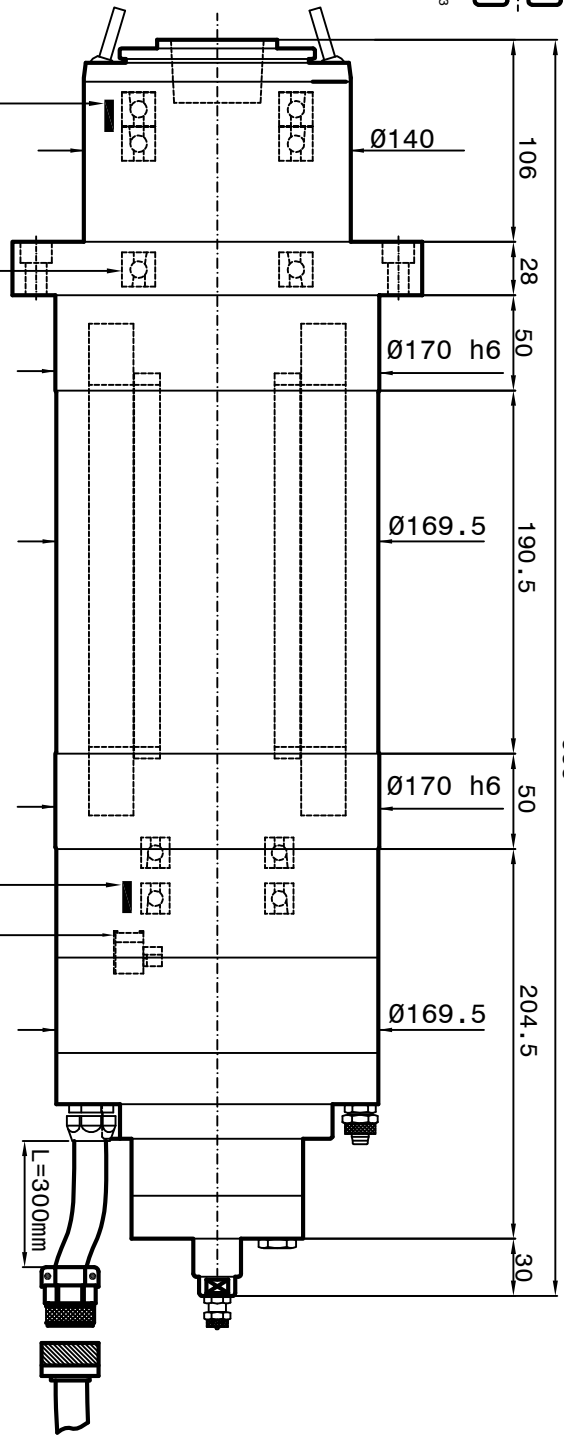


Tool Holder HSK-A63
DIN 69893

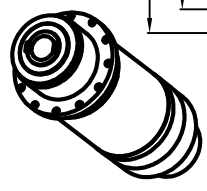


Tool holder ISO/MT 40



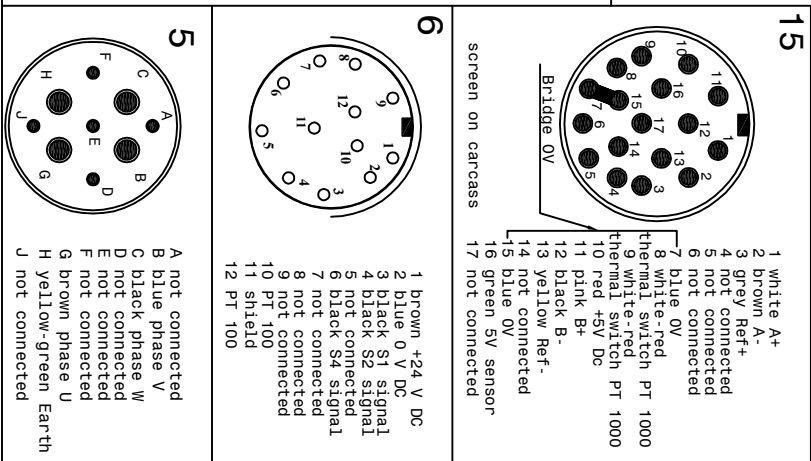
Air-Oil Bearings Lubrication
Mobil DTE Light ISO VG 32
Cooling capacity = 7150 Watt

- 1-Coolant inlet (G1/4") (8 l/min.) (3-4 bar)
- 2-Coolant outlet (G1/4")
- 3-Hydraulic pressure unclogging tool (min 80bar - max 90bar) (G1/4")
- 4-Hydraulic pressure clamping tool (Return piston) (10bar max) (G1/4")
- 5-Electric connection (L=300) 3 Phases motor - Earth
- 6-Outlet sensor's cables (S1-S2-S4) (L=300mm) S1 PNP = Toolholders clamped. S2 PNP = Piston under pressure ready to receive tools arbor. The electrospindle can not turn.
- S4 PNP = Toolholders not clamped. The electrospindle cannot turn.
- PT 100 Bearing's temperature sensor
- 7-Front-side pressurization filtered (5µm) (1-1.5 bar) (G1/8")
- 8-Tool cooling water (G3/8") (20 bar)
- 9-Front bearings Lubrication -1 (G1/8")
- 10-Front bearings Lubrication -2 (G1/8")
- 11-Rear bearings Lubrication (G1/8")
- 12-Unloading Lubrication bearings (G1/8") through aspiration type Festo VAD 1/4
- 15-Outlet encoder's cables (Gel 2444 KN) (L=300mm) -Motor thermal switch (N°1 KTY)
- 19-Inlet air arbor's cleaning (6 bar) (G1/8")

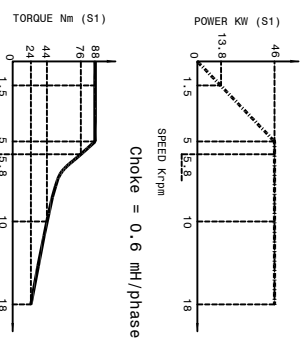


Front Thermich Sensor Bearings PT 100

Rear Thermich Sensor Bearings PT 100



SPEED	RPM	1500	5000	5800	10000	18000
FREQUENCY	Hz	100	333	397	667	1200
POWER (S1)	KW	13.8	46	46	46	46
TORQUE (S1)	Nm	88	88	76	44	24
TENSION	V	122	393	420	420	420
CURRENT	A	109	109	94	68	86



Synchronous Motor: 8 poles
Runout: taper 0.002mm

Peron Speed
INTERMACH

SUBJECT: PSI TCV-121
CUSTOMER:

Sheet: 1/1 | D/S: N°4702-00 | DATE: 10/08/2022