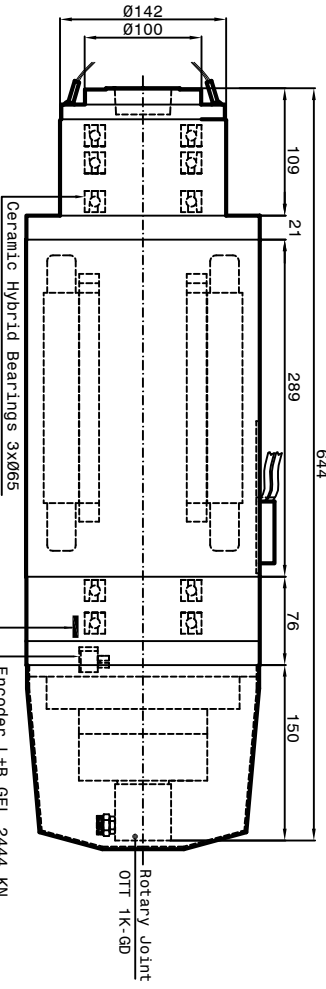
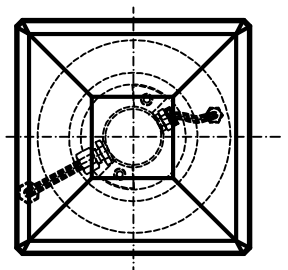
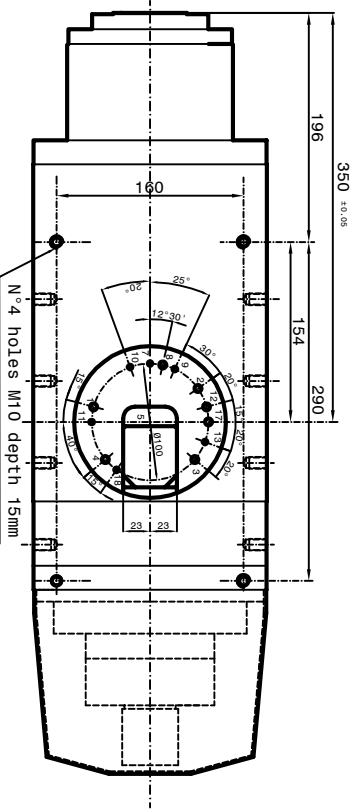
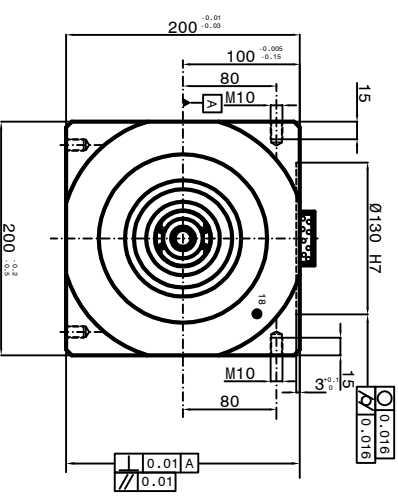


Tool holder HSK A 63  
DIN 69893

Tool holder ISO/BT 40

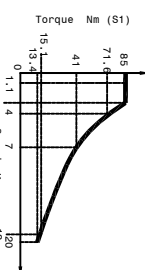
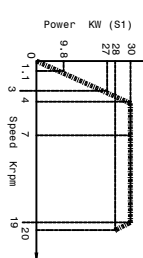


Encoder L+B GEL 2444 KN  
TYP - Z=256 - M=03  
PT 100 Bearing's Temperature Sensor



- 1-Coolant inlet (06)(3-4 bar)(6+8 l/min.)
- 2-Ceramic Hybrid Bearings 3x065
- 3-Hydraulic pressure clamping tool (Return piston)(10bar max) (05)
- 4-Hydraulic pressure unclamping tool (Return piston) (05)
- 5-Electric connection (L=2000)
- 6-Phases motor V n/2 cables 04.5
- 7-Phases motor W n/2 cables 04.5
- 8-Earth n/2 cables 04.5
- 9-PT 100 Bearing's sensor (S1 S2 S4)(L=2000mm)
- S1 PNP = Piston under pressure ready to receive tools arbor 04
- S2 PNP = Piston under pressure ready to receive tools arbor 04
- S4 PNP = Toolholders can not turn. The electrospindle cannot turn.
- S4 PNP = Toolholders not clamped 04
- The electrospindle cannot turn.
- PT 100 Bearing's temperature sensor -Outlet encoder's cables (06)(L=4000) 06(L=2000mm)
- 7-Front-side pressurization Filtered (5um) (1-1.5 bar) (04)
- 8-Tool cooling water (05)(20 bar) (04)
- 9-Front bearings Lubrication -1 (04)
- 10-Front bearings Lubrication -2 (04)
- 11-Rear bearings Lubrication -1 (04)
- 12-Unloadng Lubrication bearings (06)
- 13-Rear bearings Lubrication -2 (04)
- 17-Tool's Lubro refrigerant inlet by rotary joint (06)
- 18-Rotary Joint Leakage outlet

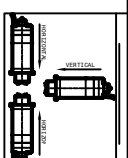
SPEED	1800	4000	15000	20000
FREQUENCY	Hz	202	955	1000
POWER (S1)	Kw	30	30	28
TORQUE (S1)	Nm	71.6	15.1	13.4
TENSION	V	235	380	380
CURRENT	A	97	61	57



Autogeneous Motor's poles  
Rated Torque: 0.002 Nm

**Peron Speed**  
CUSTOMER:

Sheet:1/1    DLS.N°179-00    DATE :



Air-Oil Bearings Lubrication  
Mobil DTE Light ISO VG 32  
Cooling capacity=4650 Watt