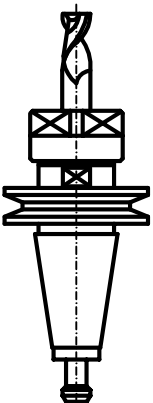
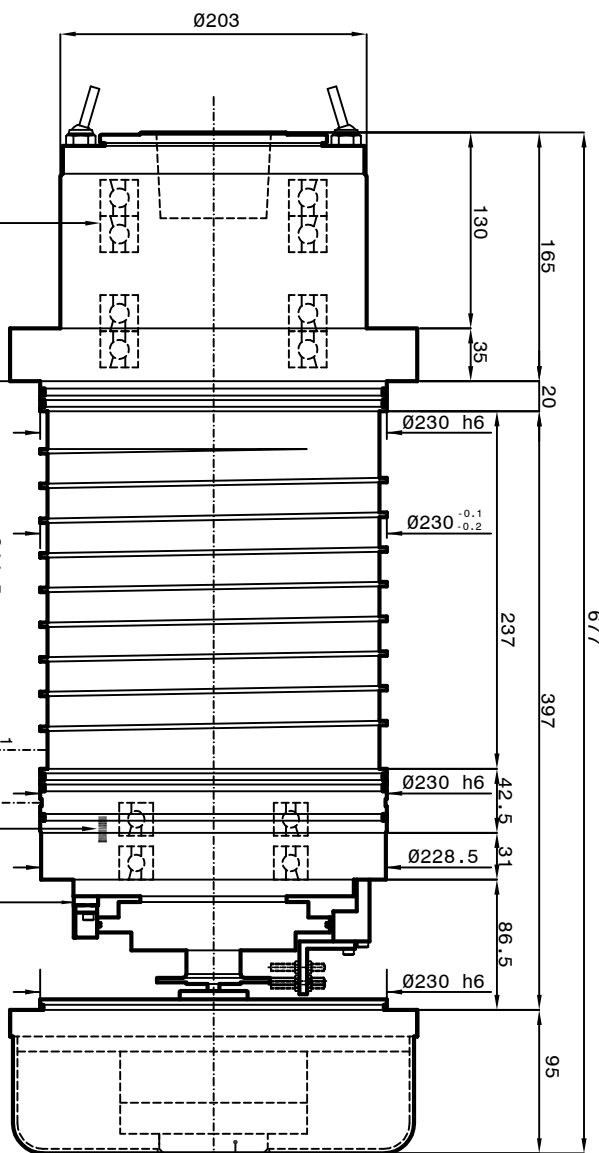
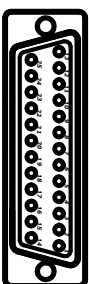


TOOL HOLDER HSK-A100 DIN 69893



TOOL HOLDER ISO/BT50

- 1-Coolant inlet (3-4 bar) (6-7 l/min.)
- 2-Coolant outlet (Ø8)
- 3-Hydraulic pressure unclamping tool (min 80bar - max 90bar) (Ø5)
- 4-Air pressure clamping tool (Ø5)
- 5-Return piston (60bar max) (Ø5)
- 5-Electric connection
- 3 Phases motor - Earth
- Phase V n°2 cables Ø7 mm
- Phase U n°2 cables Ø7 mm
- Earth n°2 cables Ø7 mm
- 6-Outlet sensor's cables (S1-S2-S4)
- S1 PNP = Piston under pressure ready
- S2 PNP = Piston under pressure ready
- S4 PNP = Toolholders not clamped
- The electrospindle cannot turn.
- PT 100 bearing's temperature sensor (1-1.5 bar) (Ø4)
- 7-Front-side pressurization filtered (5µm)
- 8-Tool cooling water (Ø8) (20 bar)
- 9-Front bearings lubrication (Ø4)
- 10-Front bearings lubrication (Ø4)
- 11-Rear bearings lubrication
- 12-Unload lubrication front bearings (Ø5)
- 13-Unload lubrication type Festo 244 (KN)
- 15-Outlet aspirator's cables (N°2 PT 1000)
- 17-Tool's thermal switch (N°2 PT 1000)
- 17-Tool's Turbo refrigerant inlet by rotary (80 bar)
- Inlet air arbor's cleaning (6 bar)
- The electrospindle cannot turn.
- 18-Rotary joint leakage outlet (Ø1/8")



Cooling capacity=6200 Watt
Air-Oil Bearings Lubrication
Mobil DTE Light ISO VG 32

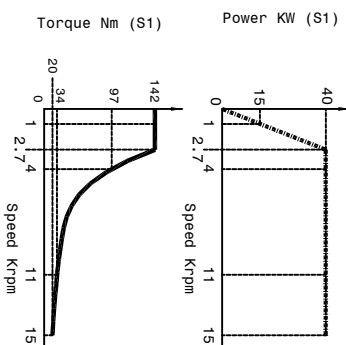
Connector 25 pin

Signal encoder	Signal prox	+24v
1 = White	6 = Brown	0v
2 = Brown	7 = Blue	S1
3 = Pink	19 = Black	S2
4 = Black	20 = Black	S4
5 = Grey	21 = Black	not connected
14 = Yellow	22 = not connected	not connected
15 = Red	23 = not connected	not connected
16 = Blue	24 = not connected	not connected
17 = Green	25 = not connected	not connected
18 = Schield		

Signal thermich switch

8 = Sonde PT 1000	White
9 = Sonde PT 1000	Red
10 = Sonde PT 1000	White
11 = Sonde PT 1000	Red
12 = Sonde PTC 145	Yellow
13 = Sonde PTC 145	Yellow

SPEED	72	1000	2700	4000	11000	15000
POWER (S1)	188	264	780	1000		
TORQUE (S1)	15	40	40	40	31	30
TENSION (S1)	104	295	390	390	390	37
POWER (S6-40% 2 min.)	184	50	62	62	43	31
TORQUE (S6-40% 2 min.)	128	178	122	43	31	
TENSION (S6-40% 2 min.)	104	295	390	390		
CURRENT (S6-40% 2 min.)	147	141	107	94	82	



Asynchronous motor: 8 poles

Runout taper 0.002mm

Peron Speed
SUBJECT: PSI TCV-S-207
CUSTOMER:

Sheet: 1/1
DWS.N°5543-00

DATE: 17/08/2022

