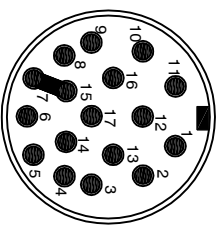
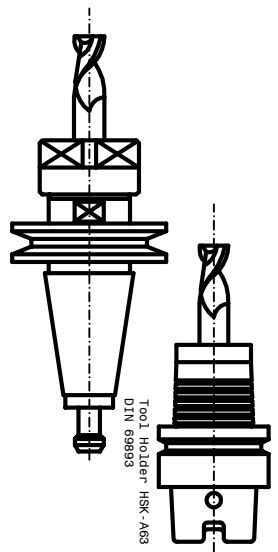
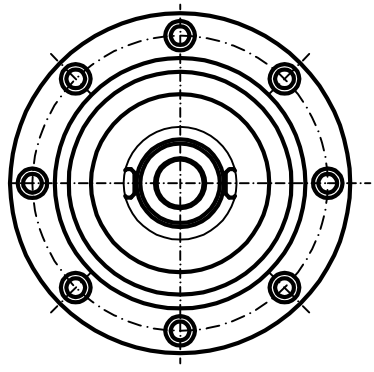
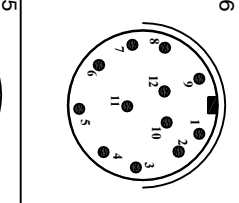


Air-Oil Bearings Lubrication
 Mobil DTE Light ISO VG 32
 Cooling capacity = 2450 Watt

- 1-Coolant inlet (G1/4") (3-4 bar) (4+5 L/min.)
- 2-Coolant outlet (G1/4")
- 3-Hydraulic pressure unclamping tool (min 80bar - max 90bar) (G1/4")
- 4-Hydraulic pressure clamping tool (Return piston) (10bar max) (G1/4")
- 5-Electric connection (L=300)
- 3 Phases motor - Earth (S1-S2-S4) (L=300mm)
- 6-Outlet sensor's cables (S1-S2-S4) (L=300mm)
- S1 PNP = Toolholders clamped.
- S2 PNP = Piston under pressure ready to receive tools arbor.
- The electrospindle can not turn.
- S4 PNP = Toolholders not clamped
- The electrospindle cannot turn.
- PT 100 Bearing's temperature sensor
- 7-Front-side pressurization filtered (5µm) (1-1.5 bar) (G1/8")
- 9-Front bearings Lubrication -1 (G1/8")
- 10-Front bearings Lubrication -2 (G1/8")
- 11-Rear bearings Lubrication (G1/8")
- 12-Unloading Lubrication bearings (G1/8") through aspiration type Festo VAD 1/4
- 15-Outlet encoder's cables (Gel 2444 KN) (L=300mm) Motor thermich switch (N°1 PT 1000)
- 17-Tool's Lubro-refrigerant inlet by rotary joint(G1/4") (80bar max)
- Inlet air arbor's cleaning (6 bar)
- The electrospindle can not turn.
- Inlet air rotary joint (10 bar max)
- 18-Rotary joint leakage outlet (G1/8")

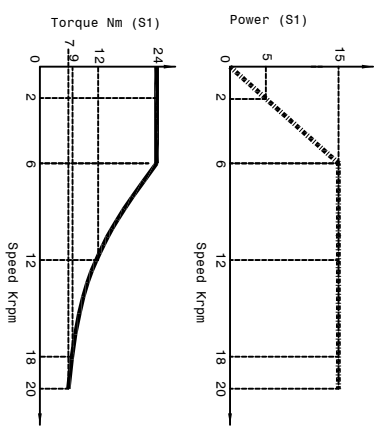


- 15
- 1 white A+
 - 2 brown A-
 - 3 grey Ref+
 - 4 not connected
 - 5 not connected
 - 6 not connected
 - 7 blue 0V
 - 8 white-red thermal switch PT 1000
 - 9 white-red thermal switch PT 1000
 - 10 red +5V Dc
 - 11 pink B+
 - 12 black B-
 - 13 yellow Ref-
 - 14 not connected
 - 15 blue 0V
 - 16 green 5V sensor
 - 17 not connected
- screen on carcass



- 6
- 1 brown +24 V DC
 - 2 blue 0 V DC
 - 3 black S1 signal
 - 4 black S2 signal
 - 5 not connected
 - 6 black S4 signal
 - 7 not connected
 - 8 not connected
 - 9 not connected
 - 10 PT 100
 - 11 not connected
 - 12 PT 100
- 5
- V blue phase V
 - W black phase W
 - U brown phase U
 - PE Yellow-green Earth
 - 1 not connected
 - 2 not connected
 - 3 not connected
 - 4 not connected

SPEED	RPM	2000	6000	12000	18000	20000
FREQUENCY	Hz	108	308	600	900	1000
POWER (S1)	KW	5	15	15	15	15
POWER (S1)	Nm	24	24	12	8	7
TENSION (S1)	V	73	195	380	380	380
CURRENT (S1)	A	67	67	46	40	38
POWER (S6-60% 2 min.)	KW	6.2	19	19	19	19
TENSION (S6-60% 2 min.)	V	30	30	15	10	9
CURRENT (S6-60% 2 min.)	A	74	195	380	380	380
CURRENT (S6-60% 2 min.)	A	81	81	51	45	43



Motor Asynchronous: 6 poles Runout taper: 0.002m

Peron Speed MANUFACTURER

SUMJECT : PSI TCV-108
 CUSTOMER :

Sheet:1/1 Dis.n°3279-00-01 DATE : 11/08/2022

