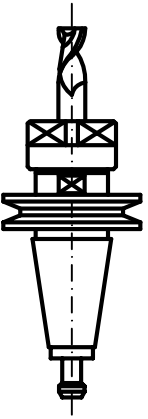
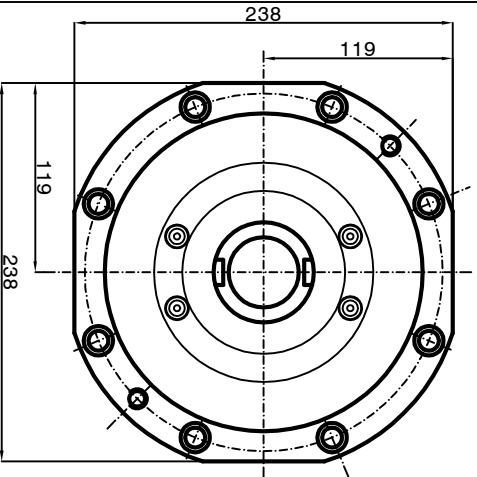
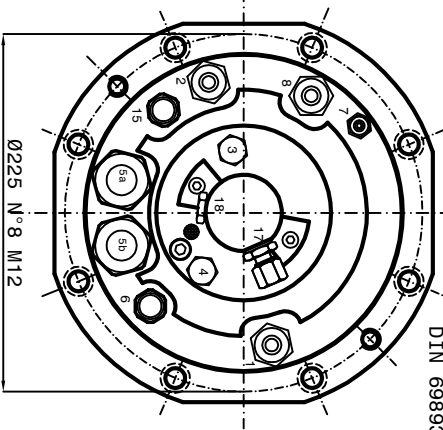
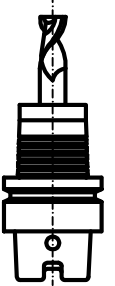
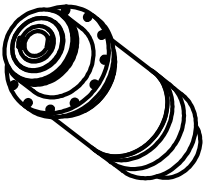
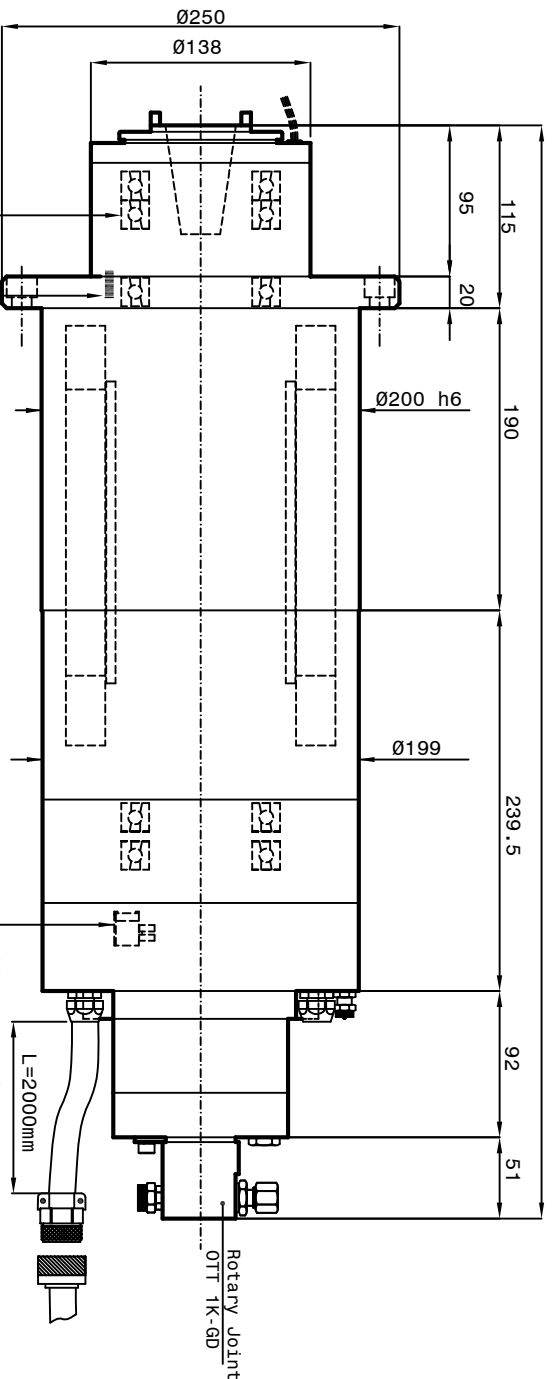


Tool Holder HSK-A63
DIN 69893



Tool holder ISO/BT 40



Ceramic-Hybrid Bearings 3xØ65

PT 100 Bearings Temperature Sensor

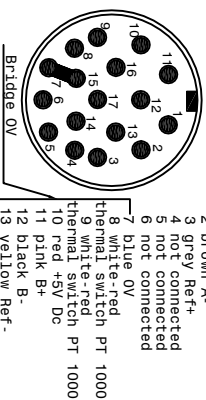
Rotary Joint
OTT TK-6D

ENCODER L+B GEL 2444 KN
1Vpp - z=256 m=0.3

Cooling capacity = 4950 Watt
Grease Bearings Lubrication

- 1-Coolant inlet (G1/2") (5 l/min.) (3-4 bar)
- 2-Coolant outlet (G1/2")
- 3-Hydraulic pressure unclamping tool (min 80bar - max 90bar) (G1/4")
- 4-Hydraulic pressure clamping tool (Return piston) (10bar max) (G1/4")
- 5-Electric connection (L=2000)
- 3 Phases motor - Earth
- 5/1a Phase V1/V3 Ø 8 n° 2 cables 2x10mm²
- 5/1b Phase W1/W3 Ø 8 n° 2 cables 2x10mm²
- 5/1d Earth Ø 8 n° 2 cables 2x10mm²
- 6-Outlet sensor's cables (S1-S2-S4) (L=2000mm)
- S1 PNP = Toolholders clamped.
- S2 PNP = Piston under pressure ready to receive tools arbor.
- The electrospindle can not turn.
- S4 PNP = Toolholders not clamped. The electrospindle cannot turn.
- PT 100 Bearing's temperature sensor
- 7-Front-side pressurization filtered (5µ)
- (1-1.5 bar) (G1/8")
- 8-Tool cooling water (Ø3/8") (20 bar)
- 15-Outlet encoder's cables (Gel 2444 KN) (L=2000mm)
- Motor thermal switch (N°1 PT 1000)
- 17-Tool's Lubro refrigerant inlet by rotary (80 bar) joint (G1/4")
- Inlet air arbor's cleaning (6 bar)
- 18-Rotary joint Leakage outlet (G1/8")

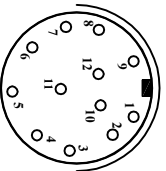
15



screen on carcass

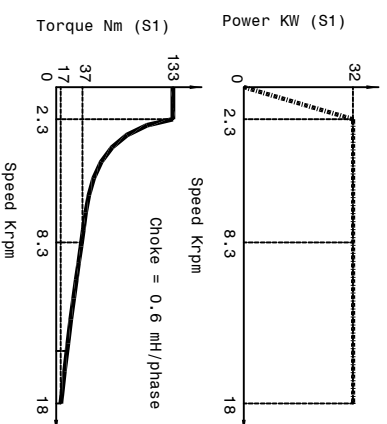
- 1 White Ar
- 2 brown A-
- 3 grey Ref+
- 4 not connected
- 5 not connected
- 6 not connected
- 7 blue 0V
- 8 white-red thermal switch PT 1000
- 9 white-red thermal switch PT 1000
- 10 red +5V Dc
- 11 pink B+
- 12 black B-
- 13 yellow Ref-
- 14 not connected
- 15 blue 0V
- 16 green 5V sensor
- 17 not connected

6



- 1 brown +24 V Dc
- 2 blue 0 V Dc
- 3 black S1 signal
- 4 black S2 signal
- 5 not connected
- 6 black S4 signal
- 7 not connected
- 8 not connected
- 9 PT 100
- 10 shield
- 11 shield
- 12 PT 100

SPEED	RPM	2300	1800	18000
FREQUENCY	Hz	115	418	900
POWER (S1)	KW	32	32	32
TORQUE (S1)	Nm	133	37	17
TENSION (S1)	V	222	420	420
CURRENT (S1)	A	183	52	59
POWER (S6-40% 2 min.)	KW	40	40	40
TORQUE (S6-40% 2 min.)	Nm	166	46	21
TENSION (S6-40% 2 min.)	V	226	420	420
CURRENT (S6-40% 2 min.)	A	229	70	65



Synchronous Motor: 6 poles

Runout taper: 0.002mm

Peron Speed
INTERMOT
SUBJECT: PSI TCV-201
CUSTOMER:

Sheet: 1/1

DIS. N°3285-00-02

DATE : 10/08/2022