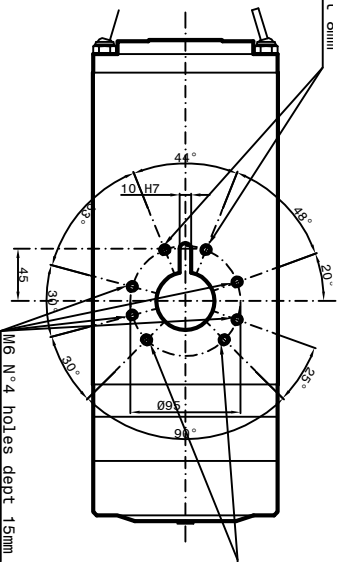
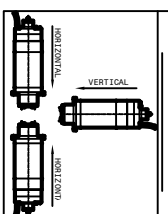
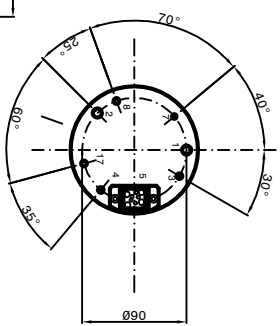
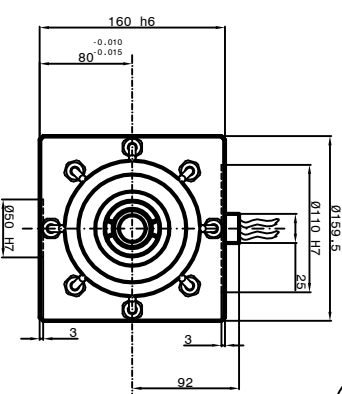
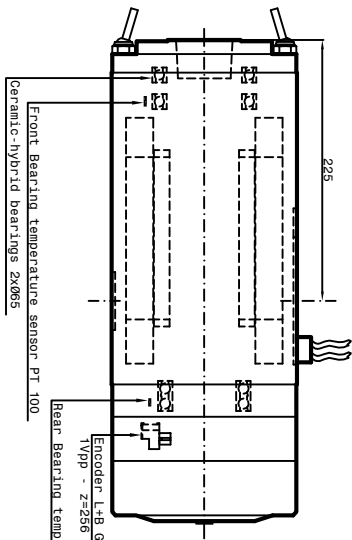


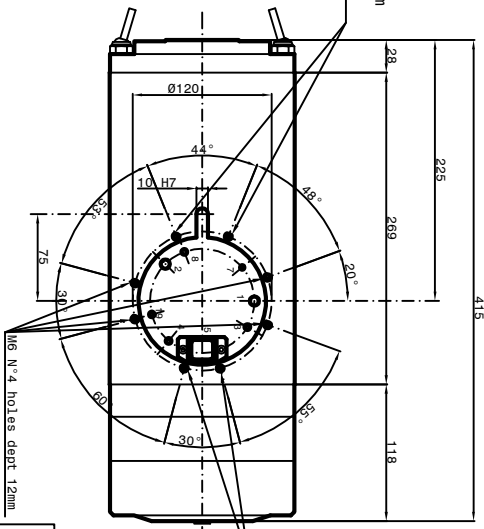
M6 N° 4 holes dept 9mm



M6 N°2 holes dept 10mm



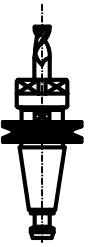
M6 N°2 holes dept 8mm



M6 N°2 holes dept 7mm



Tool holder HSK A 63  
DIN 69893

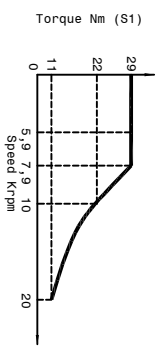
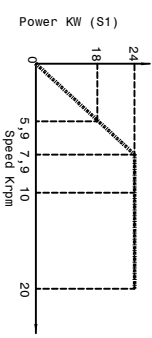


Tool holder ISO/BT 40

Grease Bearings Lubrication  
Cooling capacity = 3750 Watt

- 1 - Coolant Inlet (Ø9) (3+4 bar) (5+6 l/min.)
  - 2 - Coolant outlet (Ø8)
  - 3 - Inlet oil tool change (50 bar) (Ø6) (to be used only with arrested electrospindle)
  - 4 - Inlet oil return piston (50 bar) (Ø6)
  - 5 - Electric connection
  - 3Phases motor-Earth
  - Motor thermich switch (N°1 PT 1000) - (N°1 PTC 130)
  - outlet sensor's cables (S1-S2-S4)
  - S2 = Piston under pressure ready to receive tools arbor
  - S4 = Piston under pressure ready to receive tools arbor
- Electrospindle cable turn.**  
S4 The electrospindle cannot turn.
- 8 - Tool cooling water (Ø5) (20 bar) (1-1.5 bar) (Ø8,5)
  - 7 - Front-side pressurization filtered (5/)
  - 19 - Inlet air arbor's cleaning (Øbar max) (Ø5)

SPEED	PPM	5900	7900	10000	20000
FREQUENCY	Hz	202	267	338	667
POWER (S1)	KW	18	24	24	24
TORQUE (S1)	Nm	29	29	22	11
TENSION (S1)	V	227	300	380	380
CURRENT	A	63	63	54	48



Asynchronous motor 4 poles  
Runout taper 0.002mm

Sheet: 1/1    Dis. n° 2279-00-06    DATE :

**Peron Speed** INVENIMOVIL

SUBJECT: PSI ES-106  
CUSTOMER: