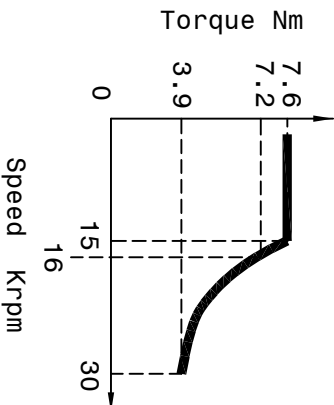
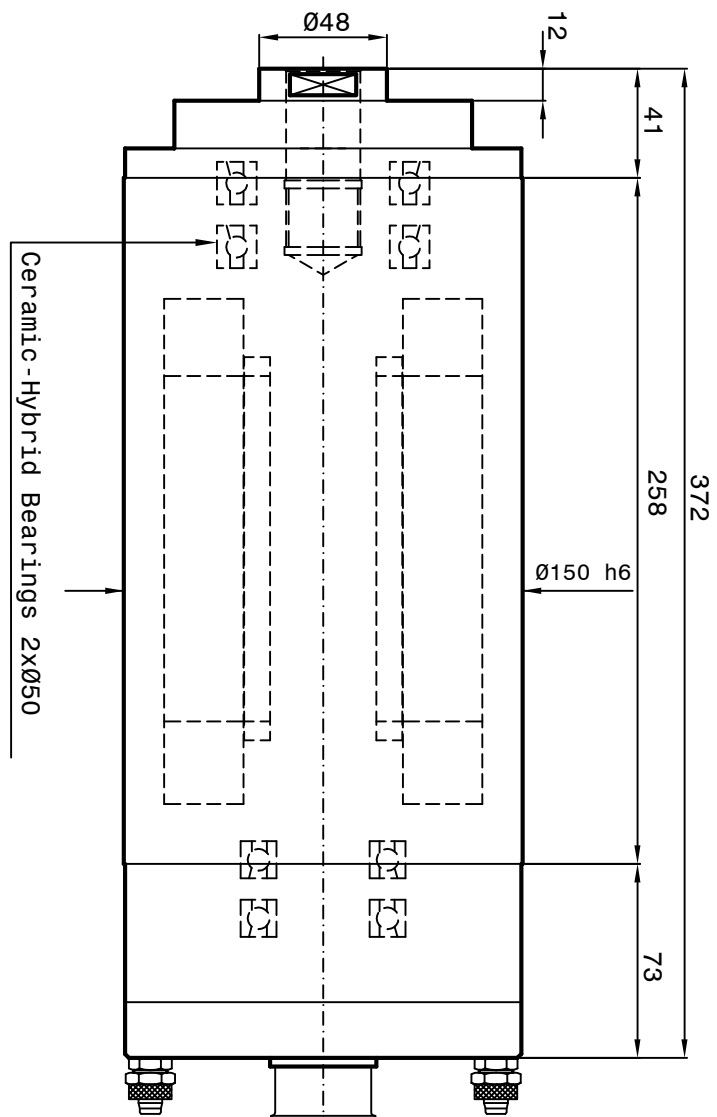
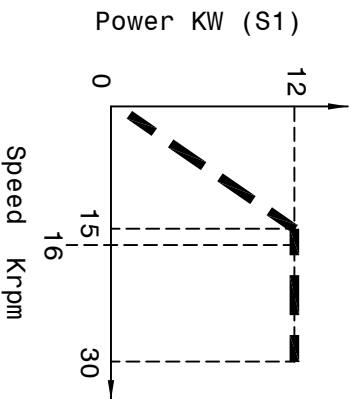
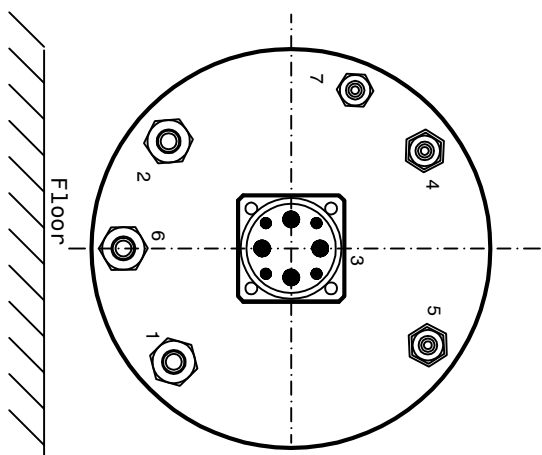
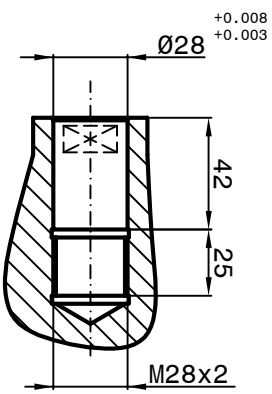


Cooling capacity = 1950 Watt
 Air-Oil Lubrication
 Mobil DTE Light ISO VG 32



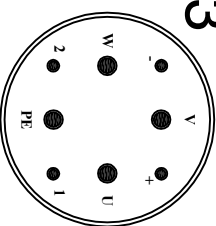
SPEED	RPM
15000	16000
30000	
FREQUENCY	Hz
500	536
1000	
POWER (S1)	KW
12	12
3.9	
TORQUE (S1)	Nm
7.6	7.2
3.9	
TENSION	V
360	380
380	
CURRENT	A
25.8	24.7
23.1	



Asynchronous motor : 4 poles Runout taper 0.001mm

- Coolant inlet (G1/8") (3±4 bar) (4±5 L/min.)
- Coolant outlet (G1/8")
- Electric connection
- 3Phases motor - Earth
- Motor thermich switch (N°1 PTC 130)
- Front bearings Lubrication (G1/8")
- Rear bearings Lubrication (G1/8")
- Unloading Lubrication bearings (G1/8") through aspiration type Festo
- VAD 1/8" (6 bar)
- Front-side Pressurization filtered (5µm) (1-1.5 bar) (G1/8")

3



- V blue phase V
- W black phase W
- U brown phase U
- PE yellow-green Earth
- 1 not connected
- 2 not connected
- + thermic switch PTC 130
- thermic switch PTC 130

Peron Speed
 INTERNATIONAL

Sheet: 1/1 Dis.n° 3911-00

SUBJECT: PSI RGP-151
 CUSTOMER:

DATE : 24/08/2022