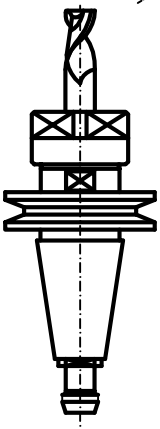


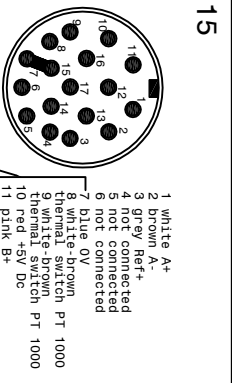
Tool holder HSK-A63
DIN 69893



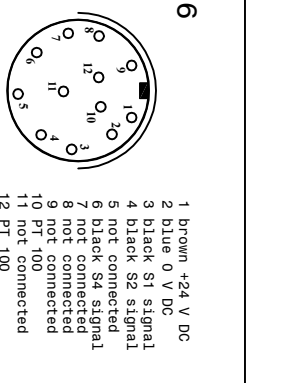
Tool holder ISO/BT 40

- 1-Coolant inlet (3-4 bar) (8-9 L/min.)
- 2-Coolant outlet bearings (Ø8)
- 3-Hydraulic pressure unclamping tool (min 80bar - max 90bar) (Ø1/4")
- 4-Hydraulic pressure clamping tool (Return piston) (10bar max) (Ø1/4")
- 5-Electric connection (L=800)
- 3 Phases V - Earth
- 6-Outlet sensor's cables (S1-S2-S4) (L=800mm) Phases V
- S2 PMP = Piston under pressure ready to receive tools arbor Ø4
- S4 PMP = Toolholders not clamped Ø4
- The electrospindle cannot turn.
- The electrospindle cannot turn.
- 7-Front-side pressurization filtered (5µm) (-PT 100 Bearing's temperature sensor)
- 9-Front bearings Lubrication -1 (Ø4)
- 10-Front bearings Lubrication -2 (Ø4)
- 11-Rear bearings Lubrication (Ø1/8")
- 12-Front unloading Lubrication bearings (Ø8) through aspiration type Festo VAD 1/8
- 12/a-Rear unloading Lubrication bearings (Ø1/8") through aspiration type Festo VAD 1/8
- 15-Outlet encoder's cables (Gel 2444 KN) (L=800mm)
- Motor thermal switch (N°1 PT 1000)
- 17-Tool's Lubro refrigerant Inlet by rotary joint (80 bar) (Ø1/4")
- 18-Rotary joint Leakage outlet (Ø1/8")

Cooling capacity=4750 Watt
Air-Oil Bearings Lubrication
Mobil DTE Light ISO VG 32

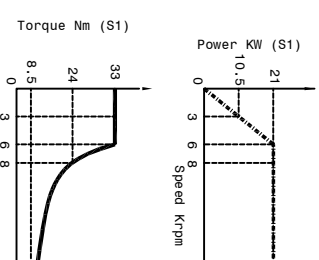


- 1 white A+
- 2 brown A+
- 3 grey Ref+
- 4 not connected
- 5 not connected
- 6 not connected
- 7 blue 0V
- 8 white-brown thermal switch PT 1000
- 9 white-brown thermal switch PT 1000
- 10 red +5V Dc
- 11 pink B+
- 12 black B-
- 13 yellow Ref-
- 14 not connected
- 15 blue 0V
- 16 green 5V sensor
- 17 not connected



- 1 brown +24 V DC
- 2 blue 0 V DC
- 3 black S1 signal
- 4 black S2 signal
- 5 not connected
- 6 black S4 signal
- 7 not connected
- 8 not connected
- 9 PT 100
- 10 PT 100
- 11 not connected
- 12 PT 100

SPEED	RPM	3000	6000	8000	24000
FREQUENCY	Hz	105	204	277	800
POWER (S1)	KW	10.5	21	27	21
TORQUE (S1)	Nm	33	33	24	8.5
TENSION (S1)	V	144	280	380	380
CURRENT (S1)	A	59	59	48	40
POWER (S6-40% 2 min.)	KW	13.5	27	27	26
TORQUE (S6-40% 2 min.)	Nm	44	44	31.5	10.5
TENSION (S6-40% 2 min.)	V	144	280	380	380
CURRENT (S6-40% 2 min.)	A	75	75	56	52



Asynchronous Motor: 4 poles
Runout taper: 0.002 mm

Peron Speed
SUBJECT: PSI TCV-S-101
CUSTOMER:

Sheet: 1/1
DTS: N°5512-00
DATE: 17/08/2022

